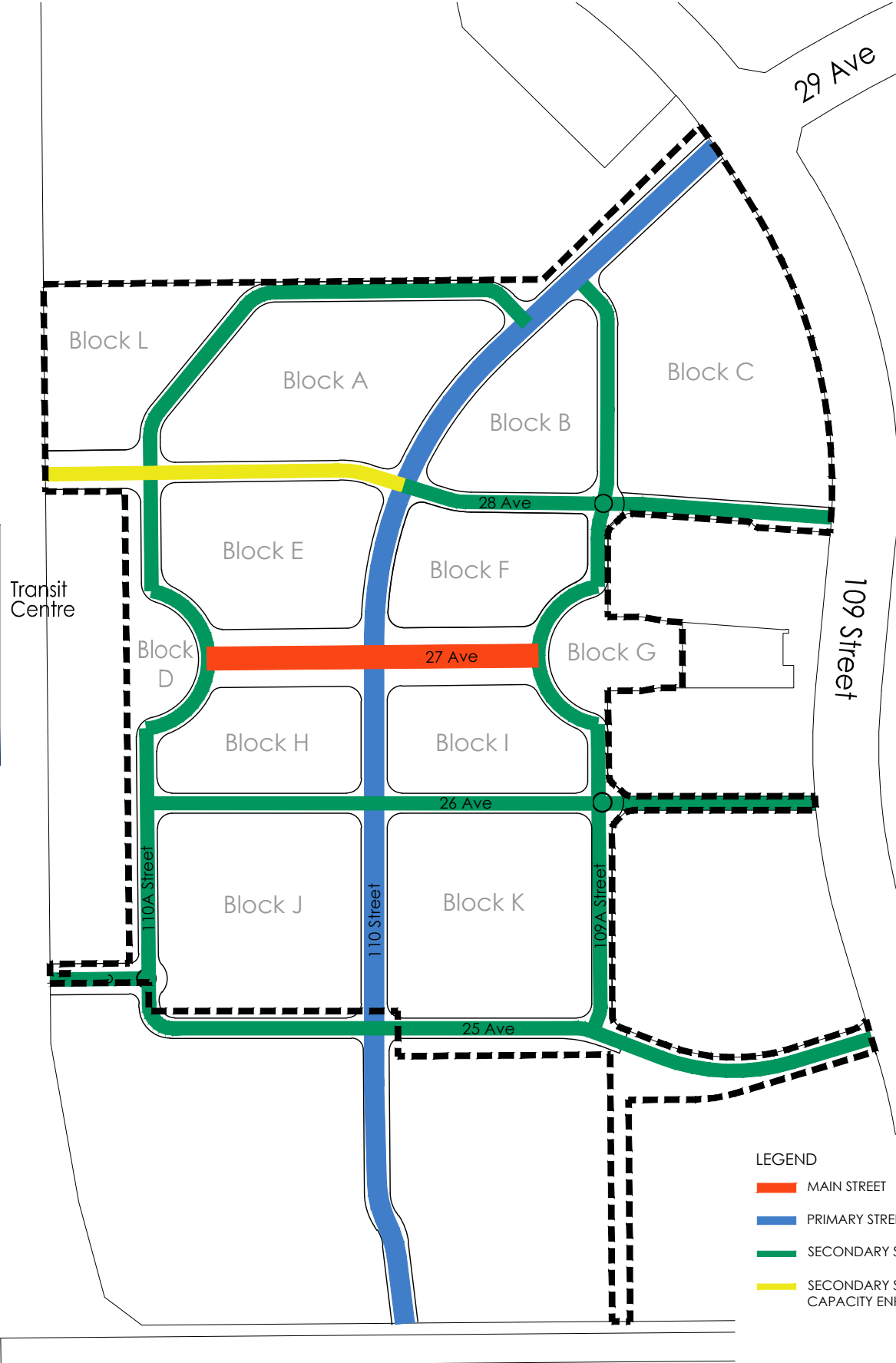


Light Rail Transit (LRT)
111 Street

Century Park - LRT Station



23 Ave

29 Ave

Block L

Block A

Block B

Block C

Block E

Block F

Block D

Block G

Block H

Block I

Block J

Block K

109 Street

25 Ave

LEGEND

-  MAIN STREET
-  PRIMARY STREET
-  SECONDARY STREET
-  SECONDARY STREET WITH CAPACITY ENHANCEMENTS



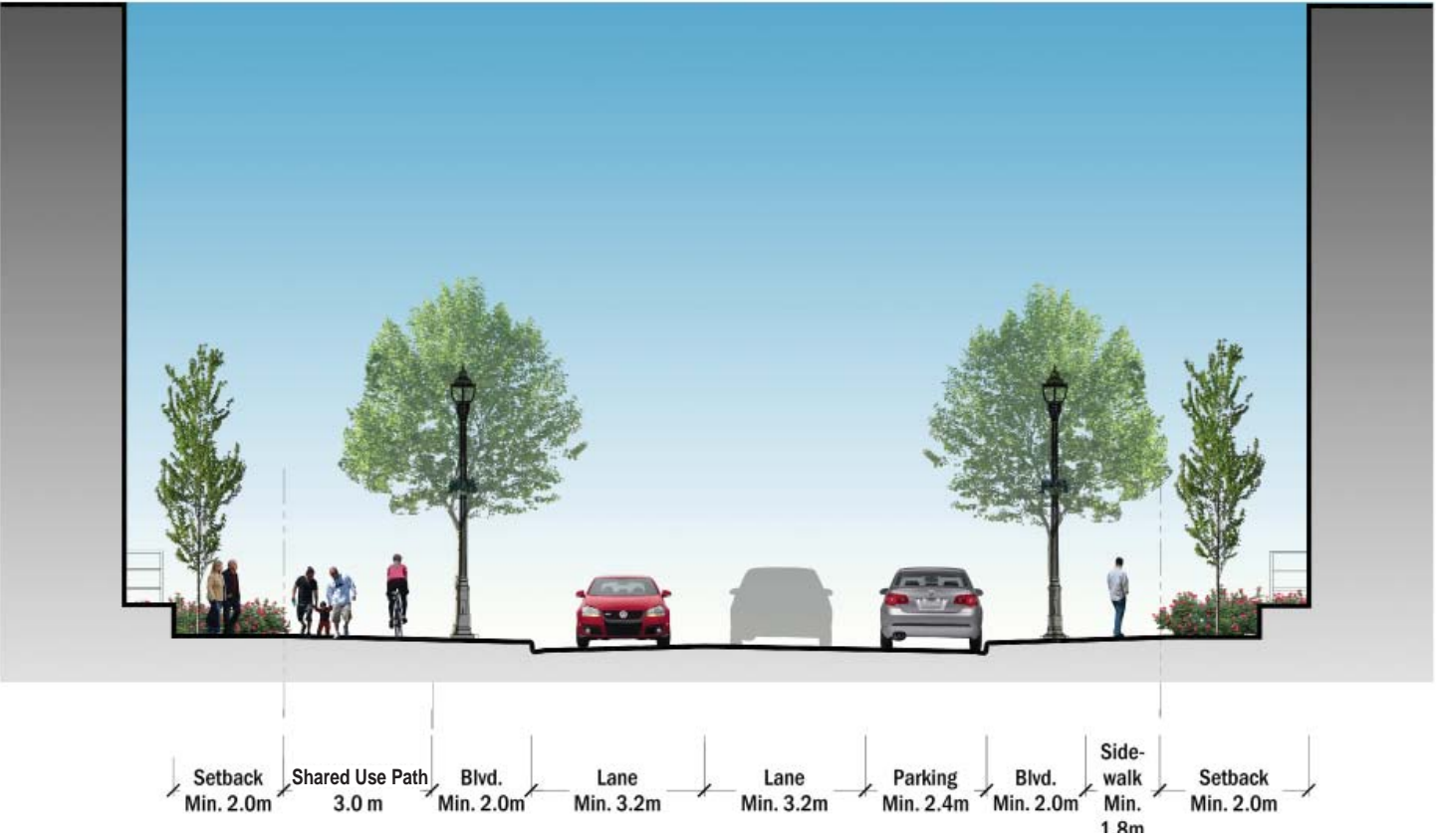
Sidewalk (Min. 2.5 m) | Blvd. (Min. 2.5 m) | Lane (Min. 3.2 m) | Median / Central Amenity (Min. 10.0 m) | Lane (Min. 3.2 m) | Blvd. (Min. 2.5 m) | Sidewalk (Min. 2.5 m)

Main Street

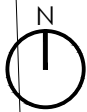


Setback (Min. 2.0m) | Sidewalk (Min. 1.8m) | Blvd. (Min. 2.0m) | Parking (Min. 2.4m) | Lane (Min. 3.2m) | Lane (Min. 3.2m) | Blvd. (Min. 2.0m) | Sidewalk (Min. 1.8m) | Setback (Min. 2.0m)

Primary and Secondary Street



Primary and Secondary Street with Shared Use Path



Light Rail Transit (LRT)

111 Street

Century Park - LRT Station

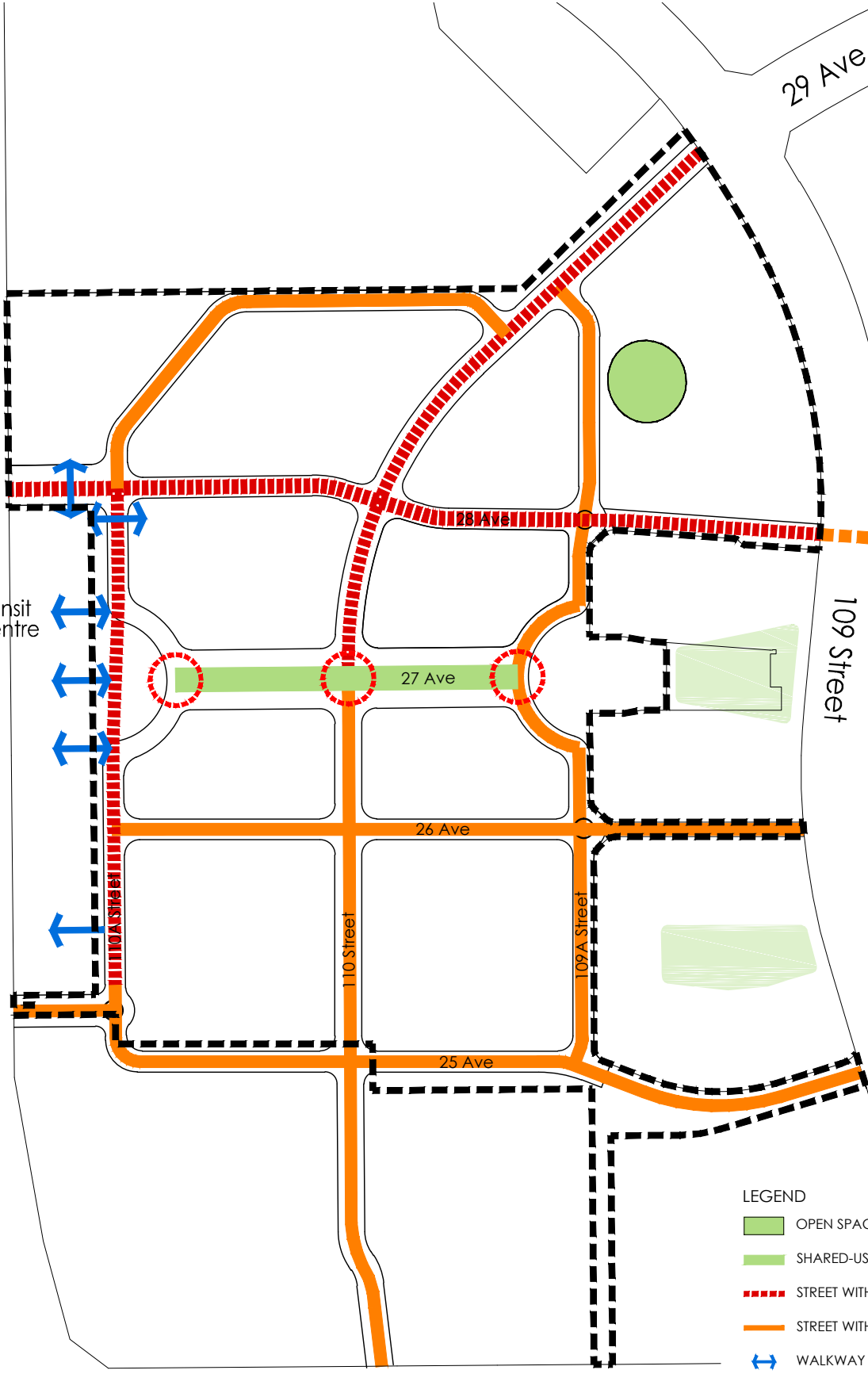
Transit Centre

29 Ave

109 Street

25 Ave

23 Ave

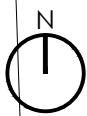


LEGEND

-  OPEN SPACE
-  SHARED-USE STREET
-  STREET WITH SHARED USE PATH
-  STREET WITH SIDEWALK (2 SIDES)
-  WALKWAY CONNECTION
-  CROSSWALK
-  TRAFFIC CALMING
-  EXISTING PARK / OPEN SPACE

Appendix 3

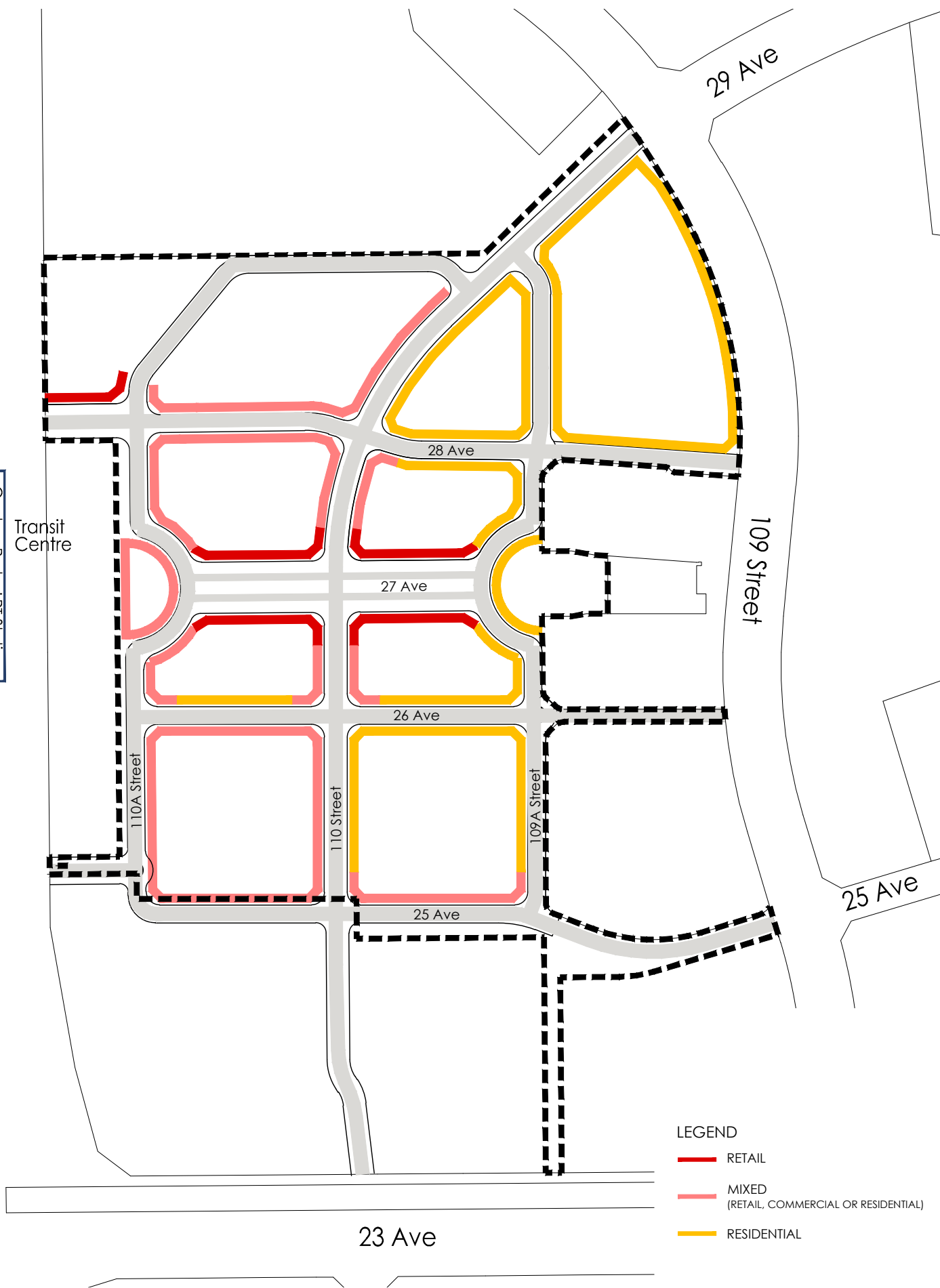
Movement Network & Open Space



Light Rail Transit (LRT)
111 Street

Century Park - LRT Station

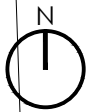
Transit Centre



- LEGEND
- RETAIL
 - MIXED (RETAIL, COMMERCIAL OR RESIDENTIAL)
 - RESIDENTIAL

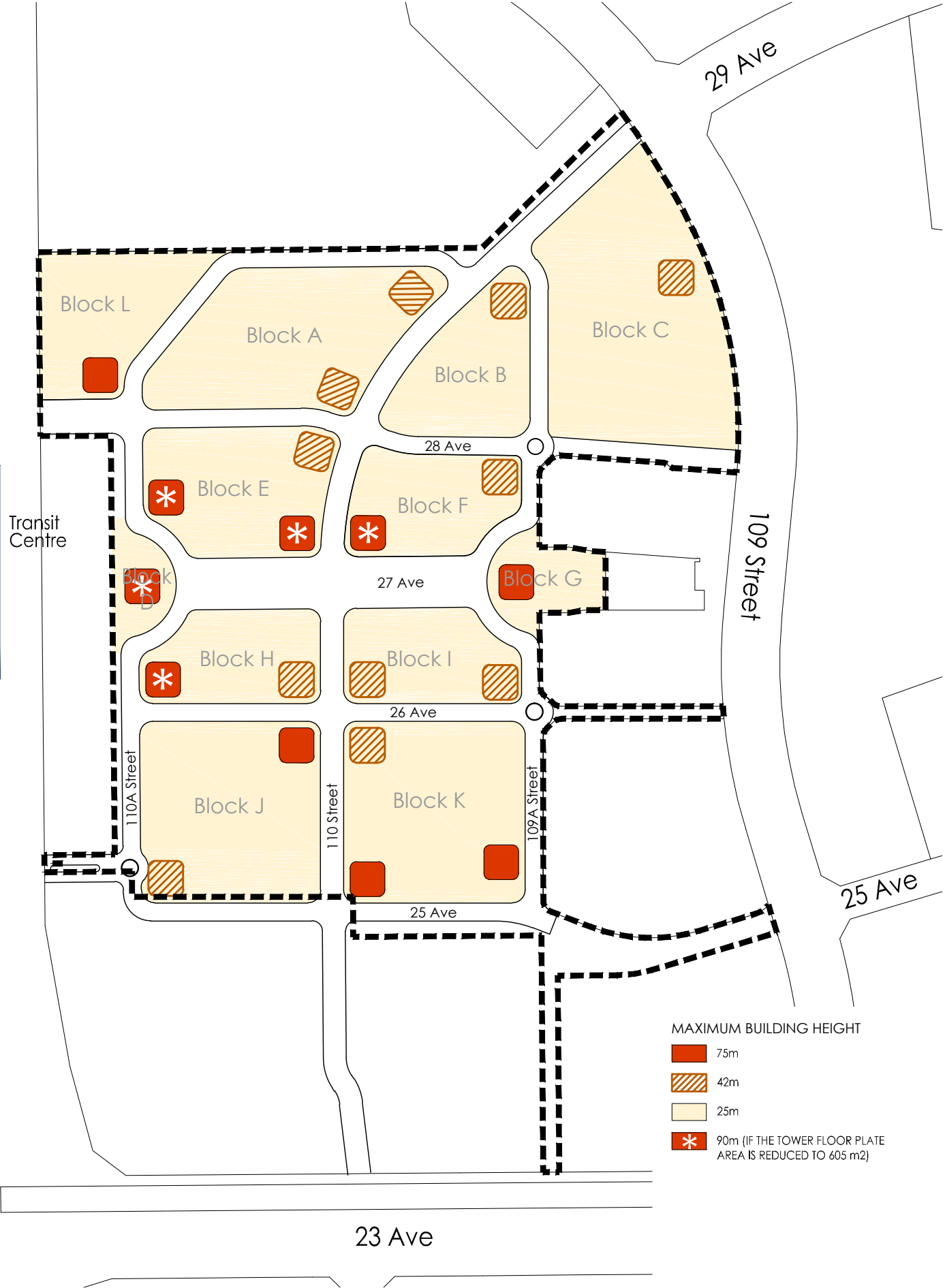
Appendix 4





Active Edges



Light Rail Transit (LRT)
111 Street

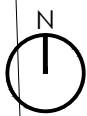
Century Park - LRT Station



- MAXIMUM BUILDING HEIGHT
-  75m
 -  42m
 -  25m
 -  90m (IF THE TOWER FLOOR PLATE AREA IS REDUCED TO 605 m²)

Appendix 5

Building Heights & Tower Locations



Light Rail Transit (LRT)

111 Street

Century Park - LRT Station

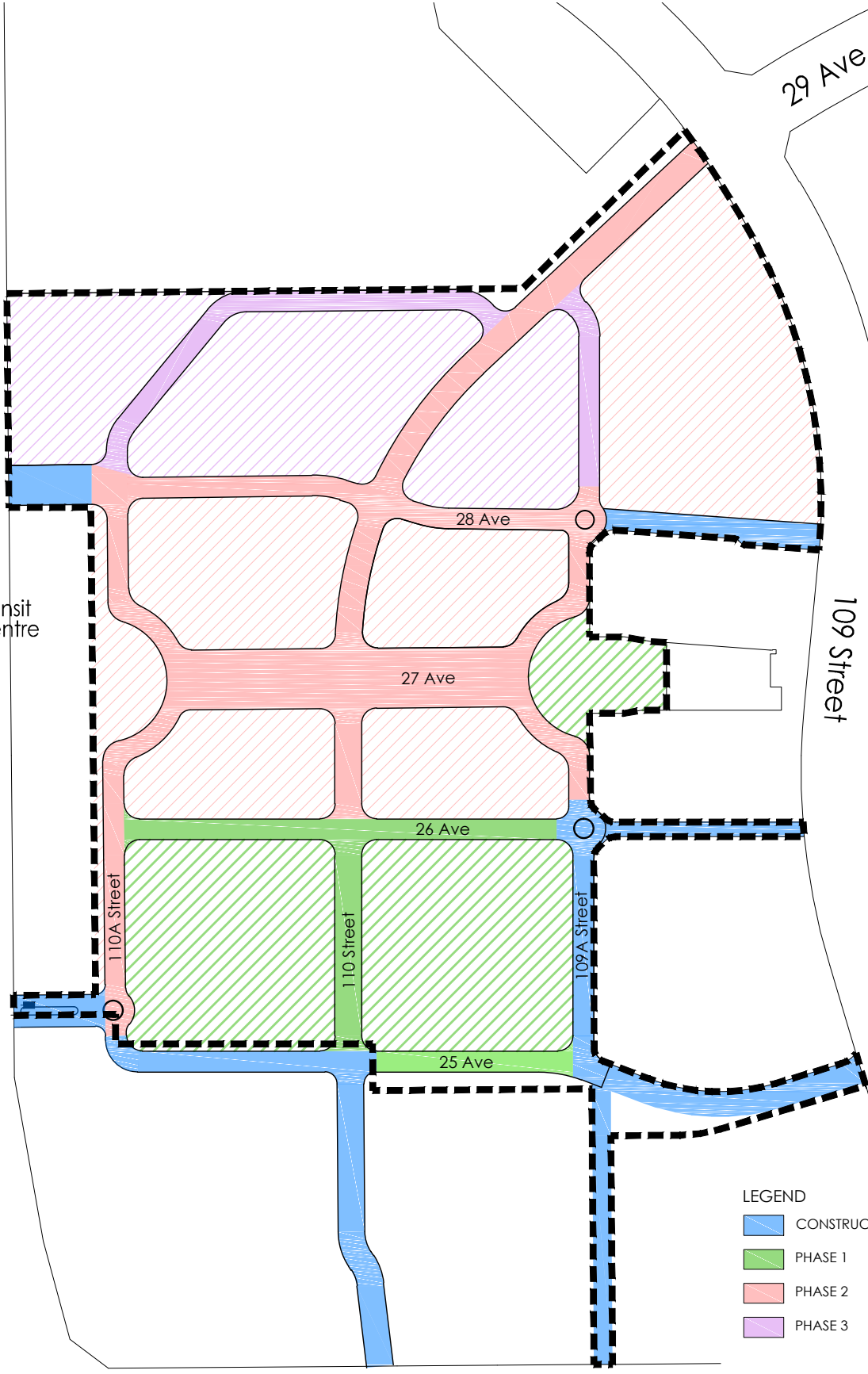
Transit Centre

29 Ave





109 Street

25 Ave

23 Ave



LEGEND

-  CONSTRUCTED
-  PHASE 1
-  PHASE 2
-  PHASE 3

Appendix 6

Generalized Phasing Plan