

1 LAYOUT PLAN

L-1 SCALE 1:200

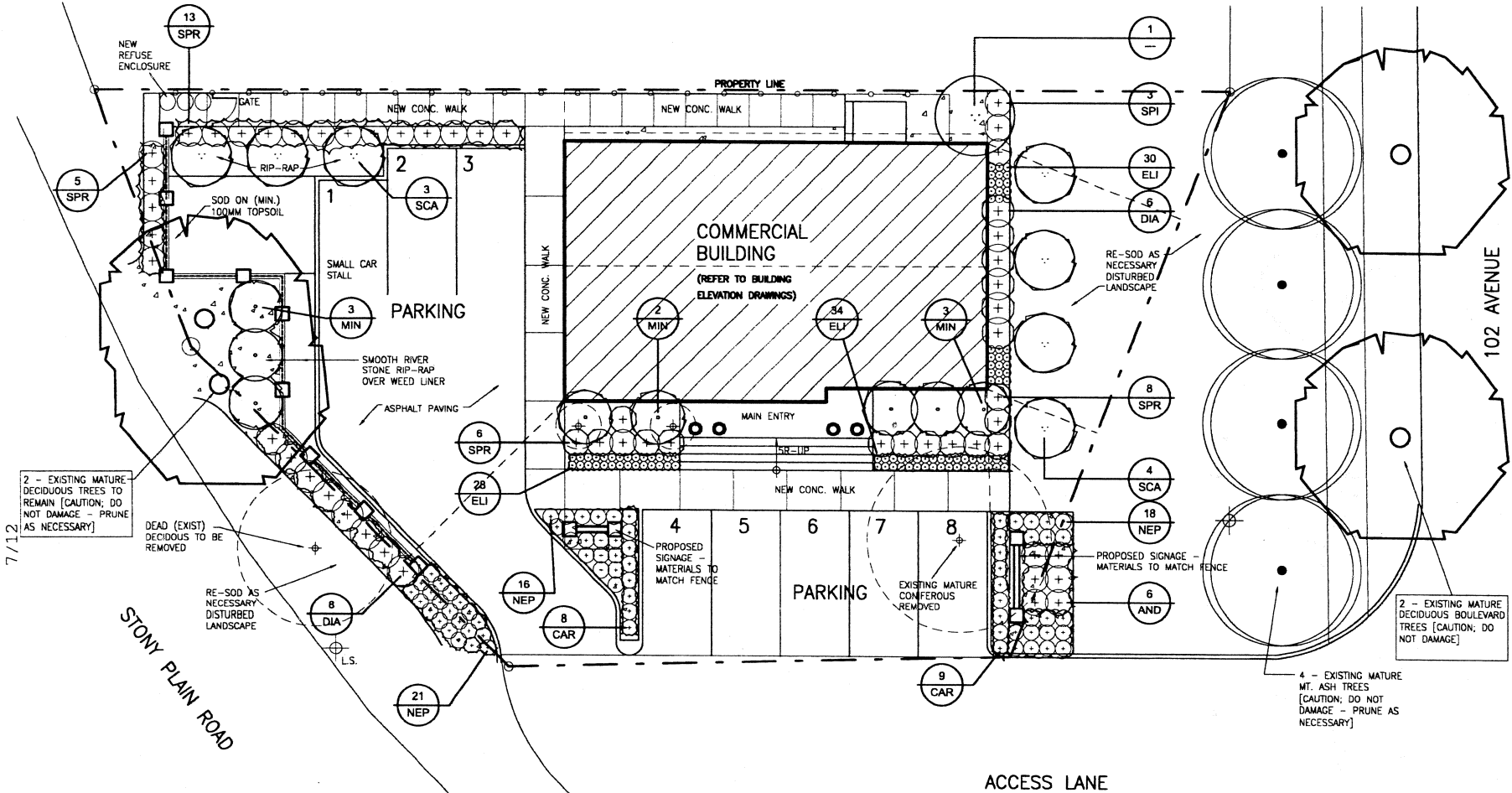
LDA07-0510- DC2 Rezoning Glenora - RE: Bankers & Traders Building Renovation City of Edmonton
 Planning Application #066178023-002 (DC2-File # B3-145,732-DC2 Bylaw)

DWG. [L-1]

BANKERS & TRADERS - REDEVELOPMENT
LAYOUT PLAN
 1:200

thirdstone inc. [A]

Project: 10335 12 Ave. SW
 City: LSA, SW
 Drawing: 1: 100, 2: 200, 3: 300, 4: 400, 5: 500, 6: 600, 7: 700, 8: 800, 9: 900, 10: 1000
 Scale: 1:200
 Date: 2009.02.02



7/12

1 LANDSCAPE PLAN

L-2 SCALE 1:200

LDA07-0510- DC2 Rezoning General - RE: Bankers & Traders Building Renovation City of Edmonton
 Planning Application #066178023-002 (DC2-File # 83-145,732-DC2 Bylaw)

PLANT LIST

KEY	QTY.	BOTANICAL NAME	COMMON NAME	SIZE	SPACE	CONDITION
SCA	7	POPULUS x. TREMULOIDES	SWEDISH COLUMNAR ASPEN	76mm CALIPER	AS SHOWN	B+B
CAR	18	CARAGANA 'FRUTEX' GLOBOSA	GLOBE CARAGANA	NO.2 CONT.	AS SHOWN	CONT.
MCK	8	PHILADELPHUS VIRGINIALIS	MINNESOTA SNOWFLAKE - MOCKORANGE	NO.5 CONT.	AS SHOWN	CONT.
DIA	14	PHYSOCARPUS 'OPULIFOLIUS 'DIABLO'	DIABLO NINEBARK	NO.2 CONT.	AS SHOWN	CONT.
SPR	35	SPIRAEA JAPONICA	GOLDBOUND SPIREA	NO.2 CONT.	AS SHOWN	CONT.
SYR	1	SYRINGA RETICULATA	JAPANESE TREE LILAC	NO.5 CONT.	AS SHOWN	CONT.
ELI	82	FESTUCA GLAUCA 'ELIJAH BLUE'	ELIJAH BLUE FESCUE	NO.2 CONT.	AS SHOWN	CONT.
NEP	68	NEPATA 'WALKER'S LOW'	WALKER'S LOW CATMINT	NO.2 CONT.	AS SHOWN	CONT.
AND	6	JUNIPERUS HORIZONTALIS	HORIZONTAL JUNIPER - ANDORRA	NO.2 CONT.	AS SHOWN	CONT.

NOTE: REFER TO SHEET L1.02 FOR TYPICAL PLANTING DETAILS AND SPECIFICATIONS

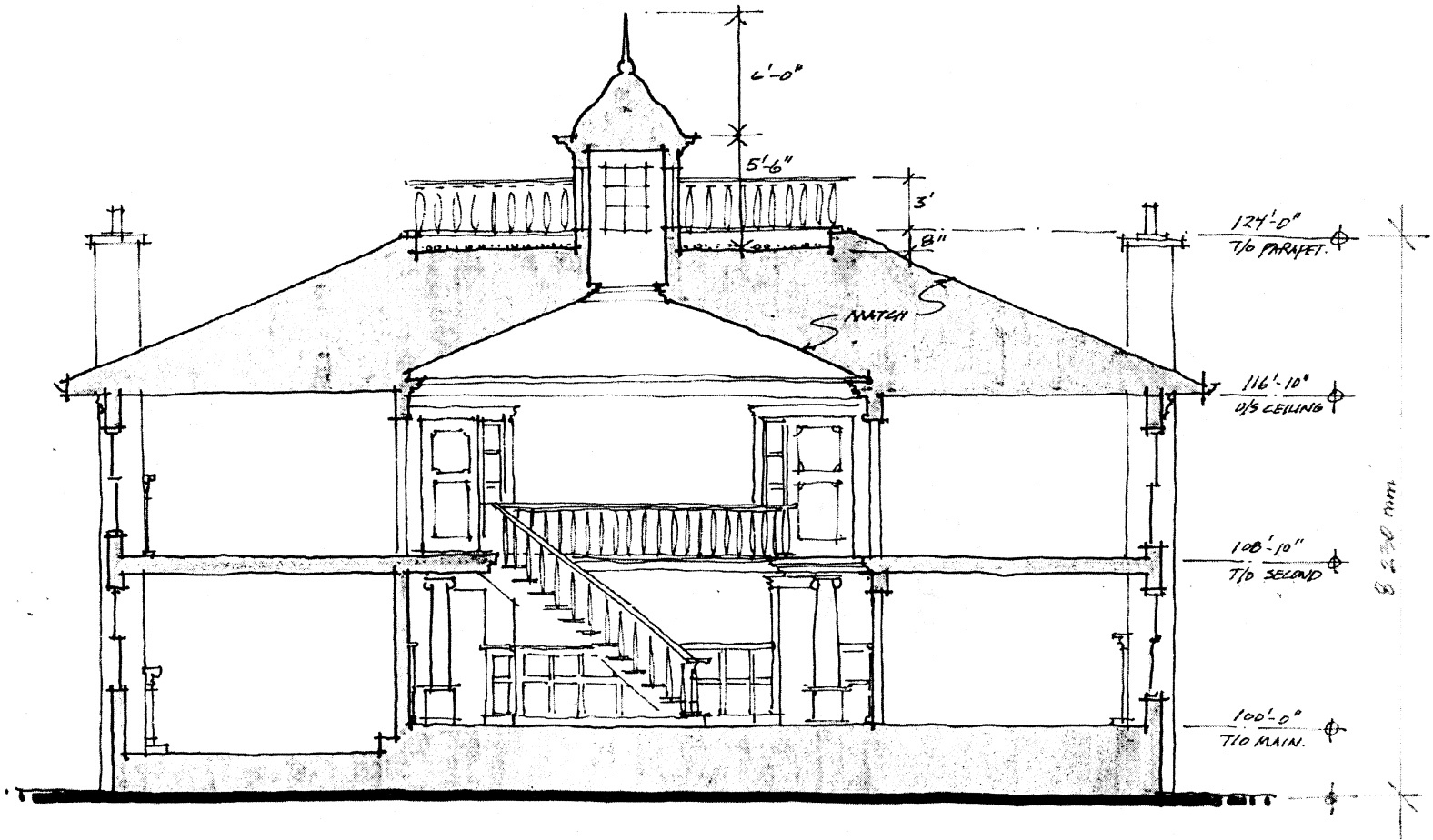
DWG. [L-2]

Project: BANKERS & TRADERS - REDEVELOPMENT
 Drawing: PLANTING PLAN, PLANT LIST AND NOTES
 Scale: 1:200

Date: 2009.02.02

thirstone inc. [A]

505, 10335-129th street
 Edmonton, AB, CA
 T: 780.423.2869
 F: 780.447.2860
 www.thirstone.ca

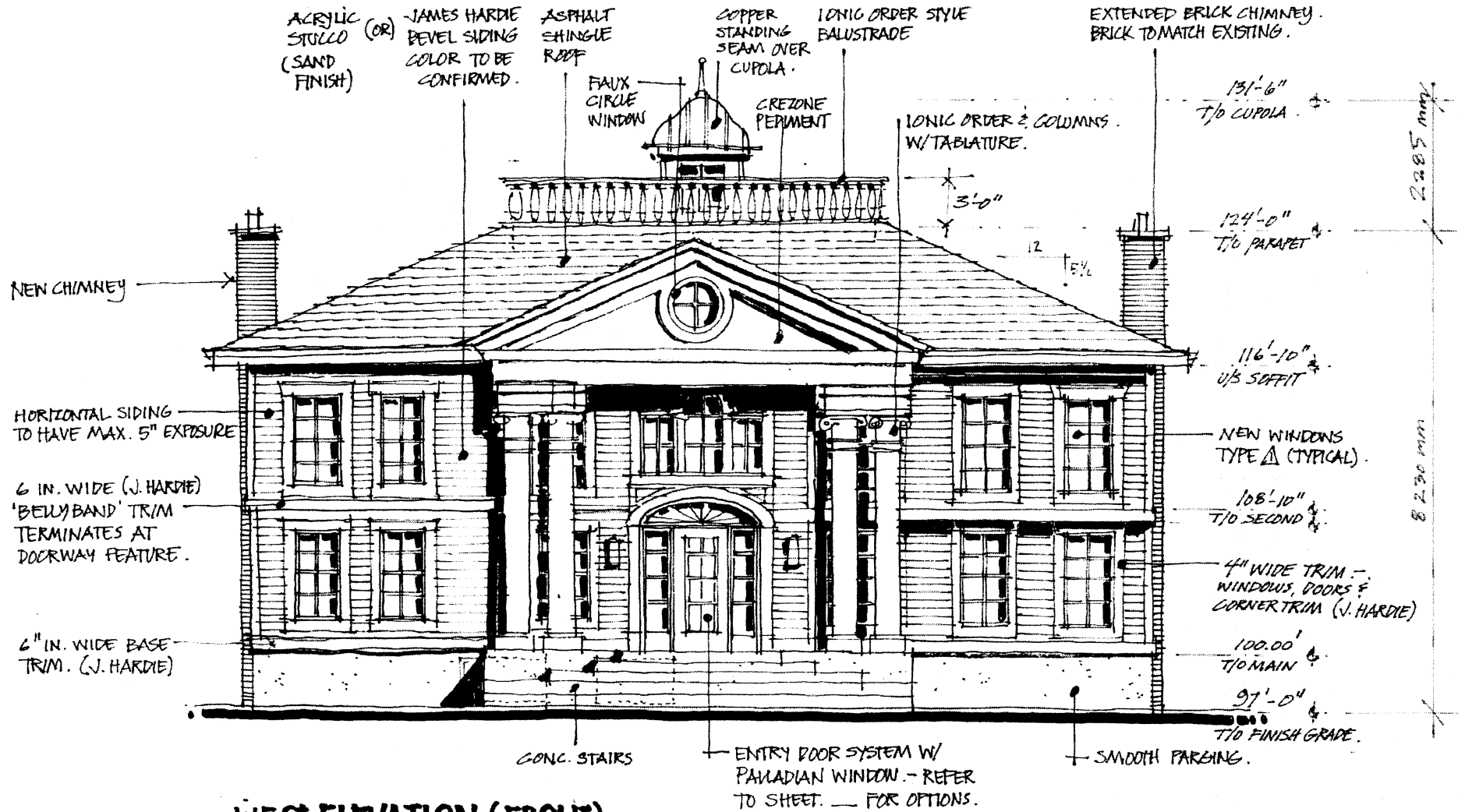


BUILDING SECTION A-A

3/16" = 1'-0"

A4.1

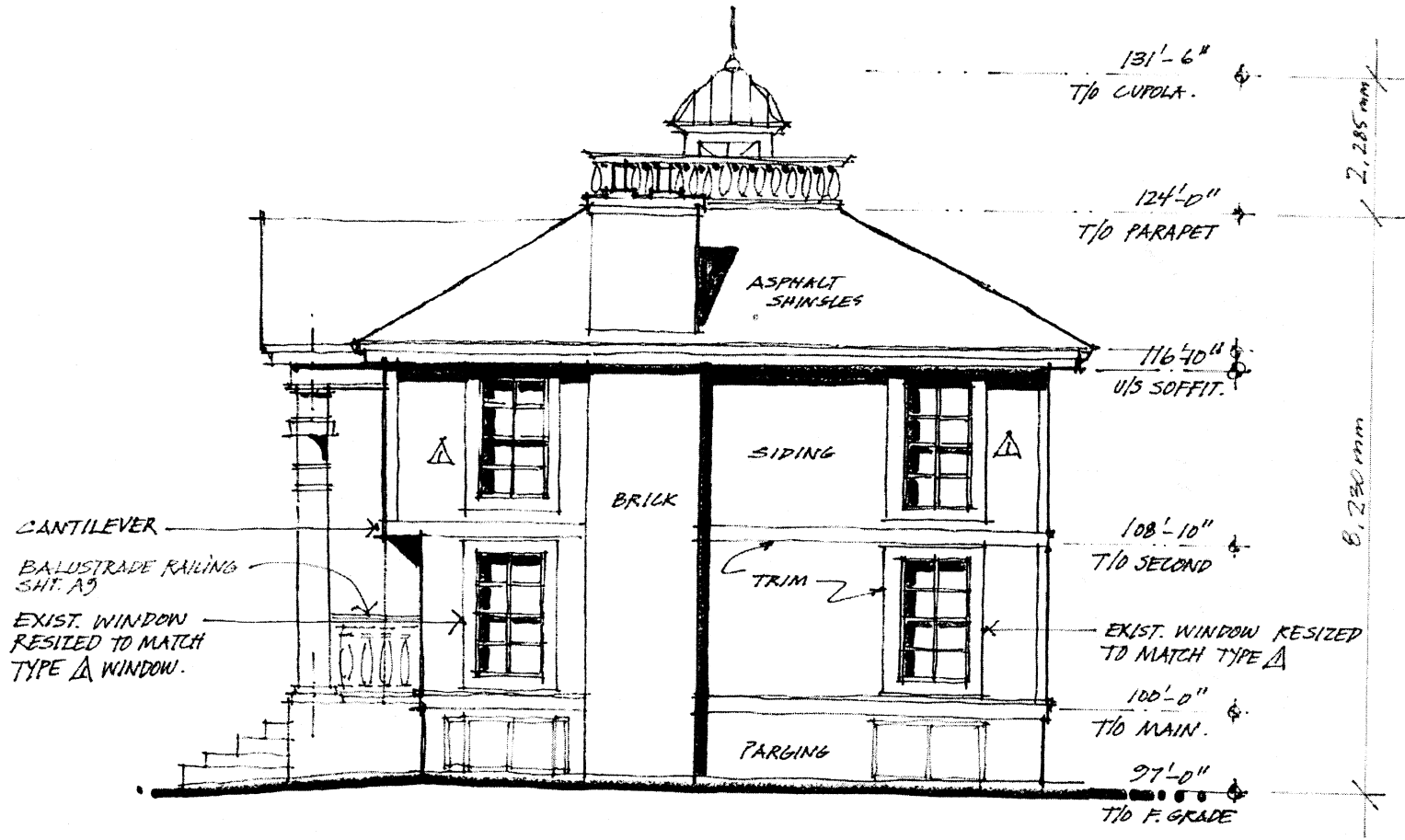
9/12



WEST ELEVATION (FRONT)

3/16" = 1'-0"

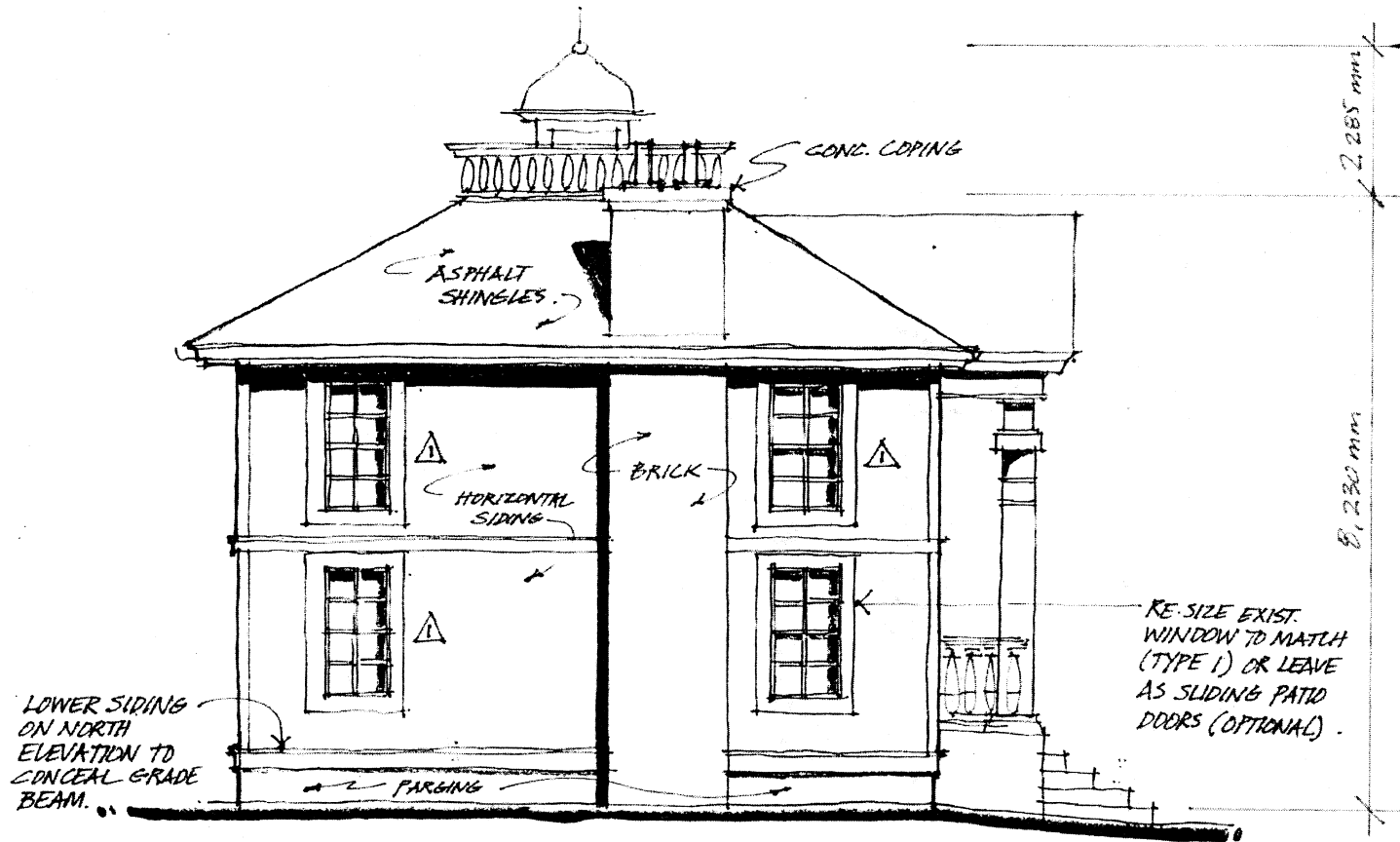
10/12



SOUTH ELEVATION (RIGHT)

3/16" = 1'-0"

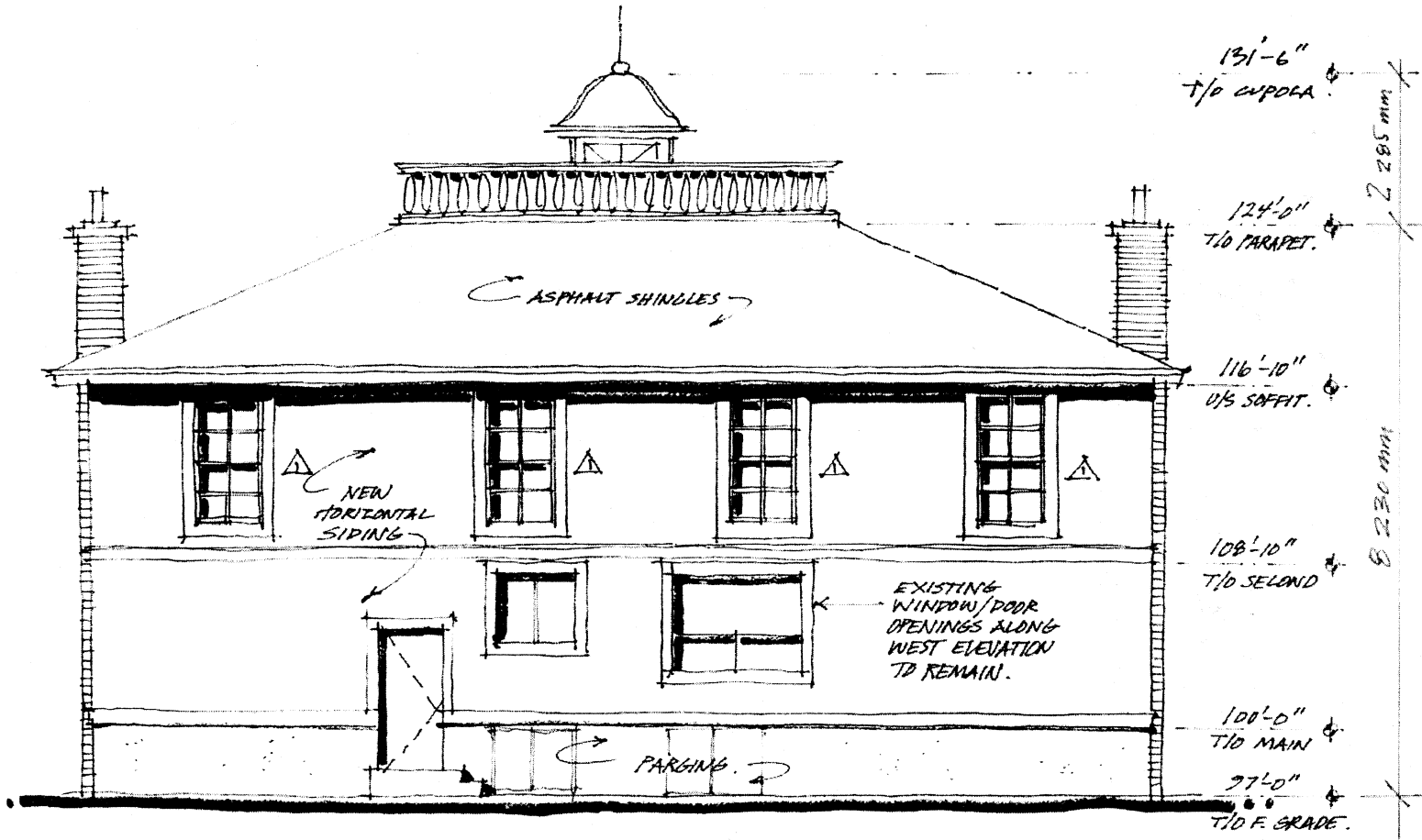
11/12



NORTH ELEVATION (LEFT)

3/16" = 1'0"

12/12



EAST ELEVATION (BACK)

3/16" = 1'-0"