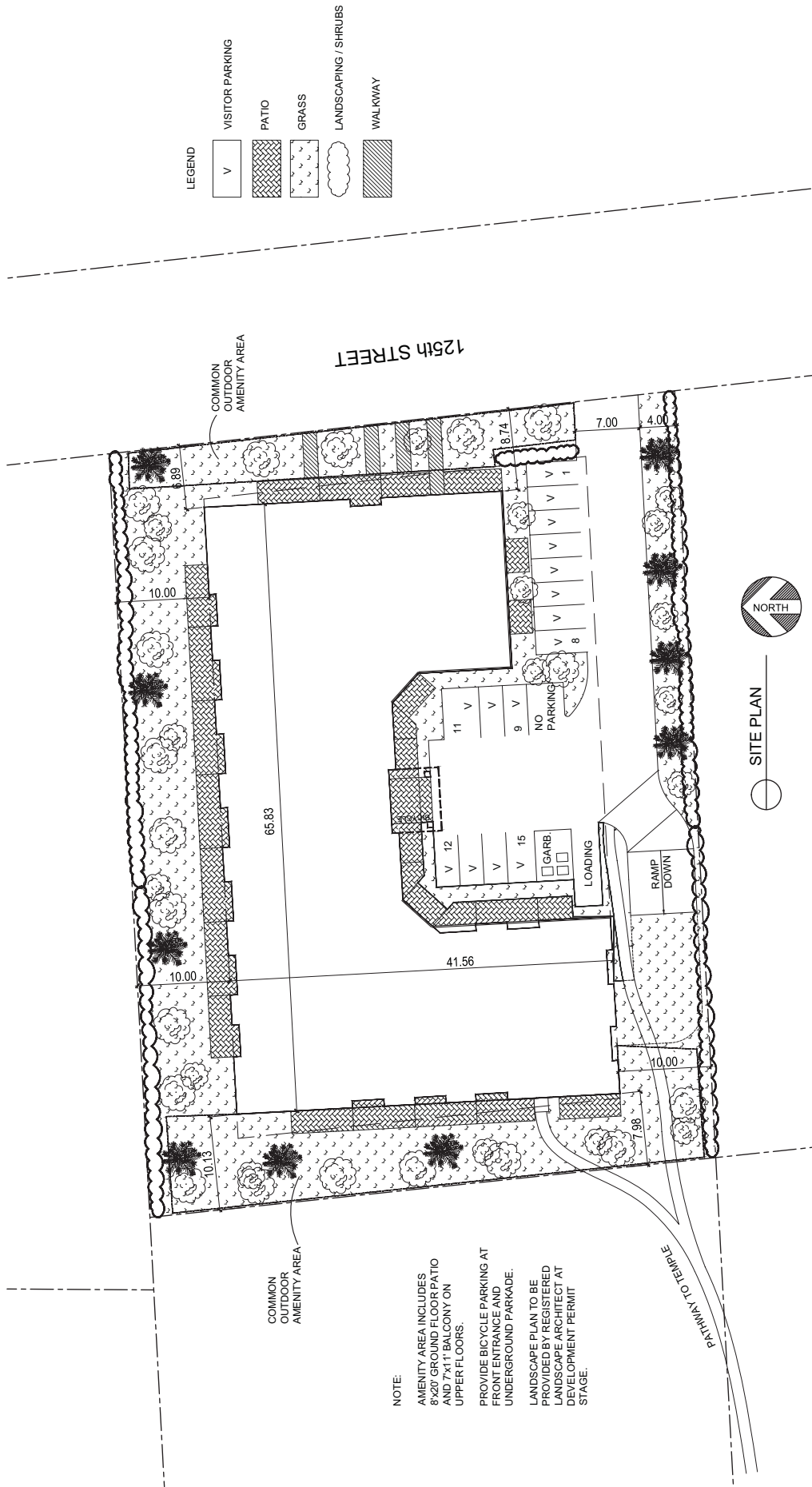


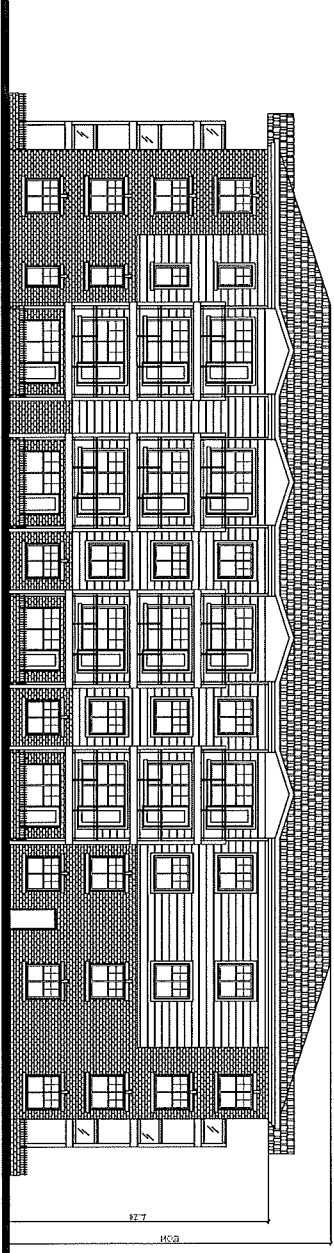
FEB 23, 2011

STEVEN HO  
ARCHITECTURE  
INCORPORATED

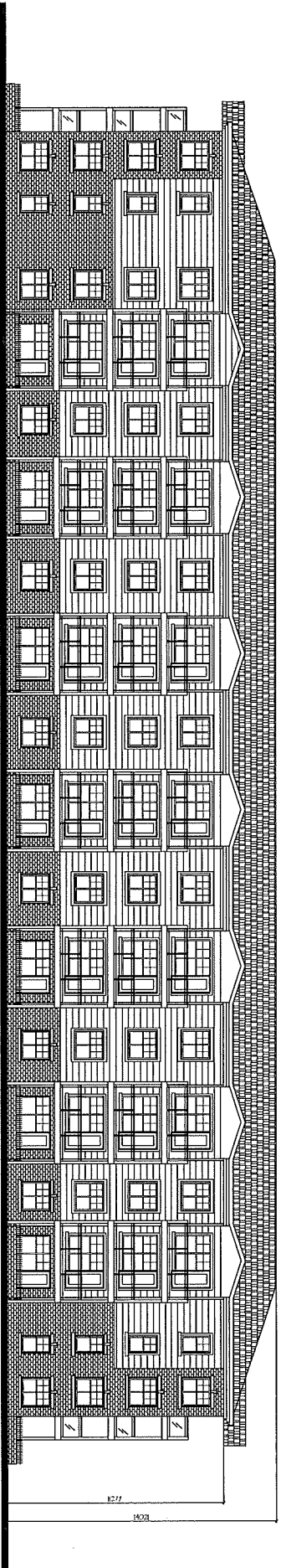


**MULTI-FAMILY CONDOMINIUM**  
LOT 7, BLOCK 62, PLAN 8422077  
14904 - 125 ST., EDMONTON, ALBERTA

TEMPLE  
DEVELOPMENT  
PARTNERSHIP



*PROPOSED 4-story CONDOMINIUM  
CONCEPTUAL WEST ELEVATION*



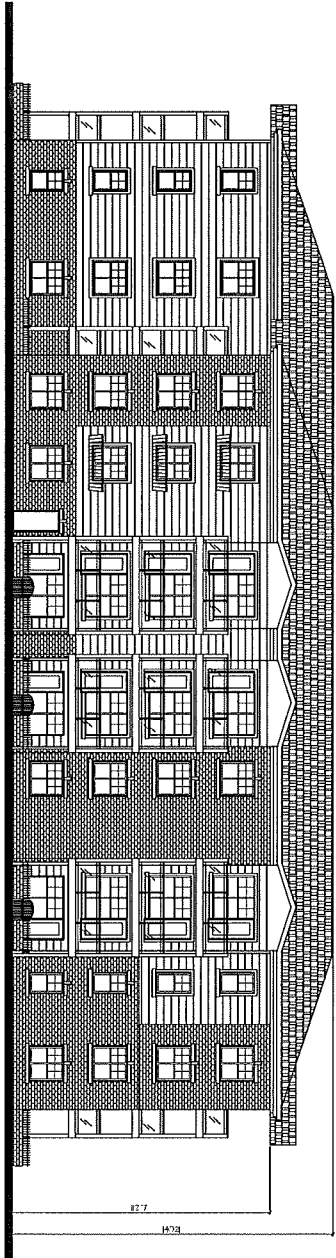
*PROPOSED 4-story CONDOMINIUM  
CONCEPTUAL NORTH ELEVATION*

TEAPLE  
DEVELOPMENT  
LIMITED  
PARTNERSHIP

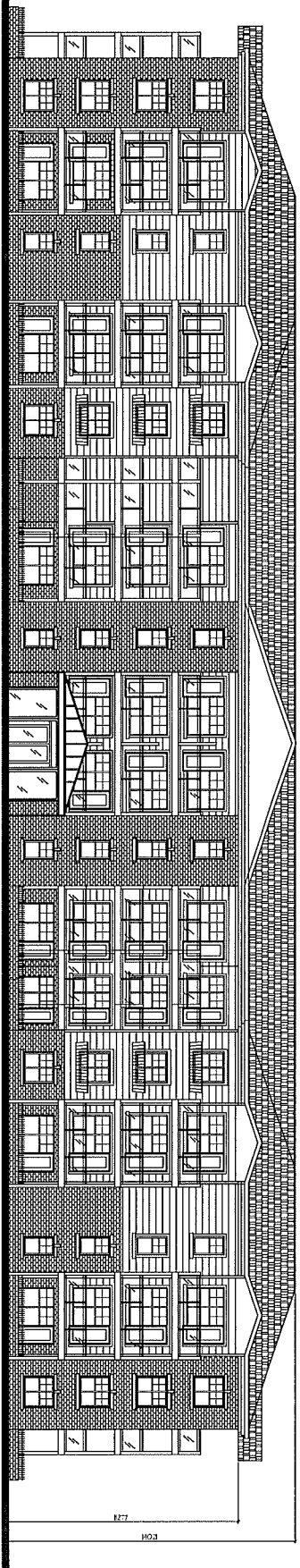
MULTI-FAMILY CONDOMINIUM  
LOT 7, BLOCK 62, PLAN 8422077  
14904 - 125 ST., EDMONTON, ALBERTA

STEVEN HO  
ARCHITECTURE  
INCORPORATED

REV. 23, 2011



*PROPOSED 4-story CONDOMINIUM  
CONCEPTUAL EAST (125 STREET) ELEVATION*



*PROPOSED 4-story CONDOMINIUM CONCEPTUAL  
SOUTH (MAIN ENTRANCE) ELEVATION*

TEMPLE  
DEVELOPMENT  
LIMITED  
PARTNERSHIP

MULTI-FAMILY CONDOMINIUM  
LOT 7, BLOCK 62, PLAN 8422077  
14904 - 125 ST., EDMONTON, ALBERTA

STEVEN HO  
ARCHITECTURE  
INCORPORATED

FEB 25, 2011