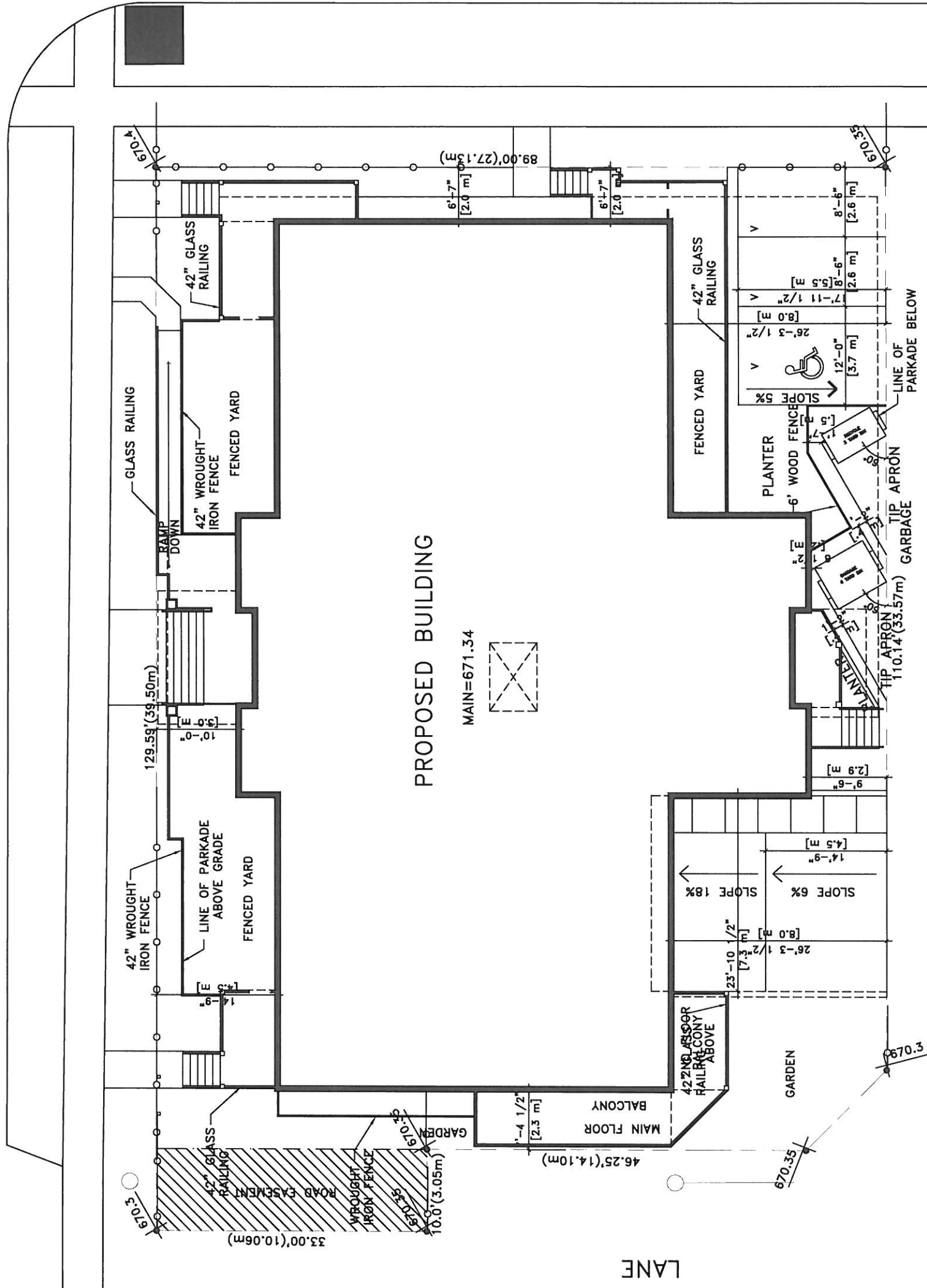


112 AV

94 ST

APPENDIX 1

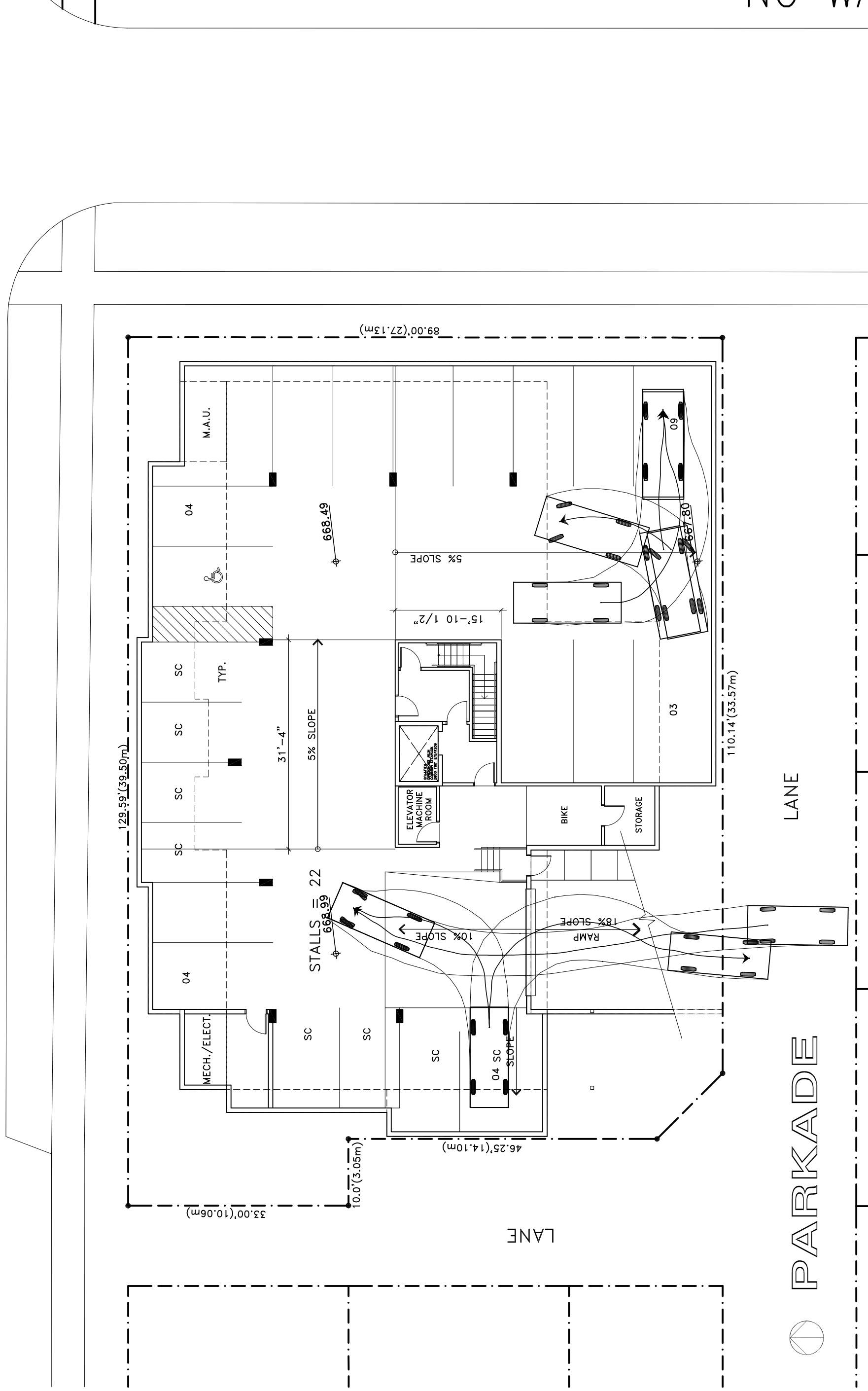


LEGEND
 ■ STREET LIGHTS



LANE

112 AV



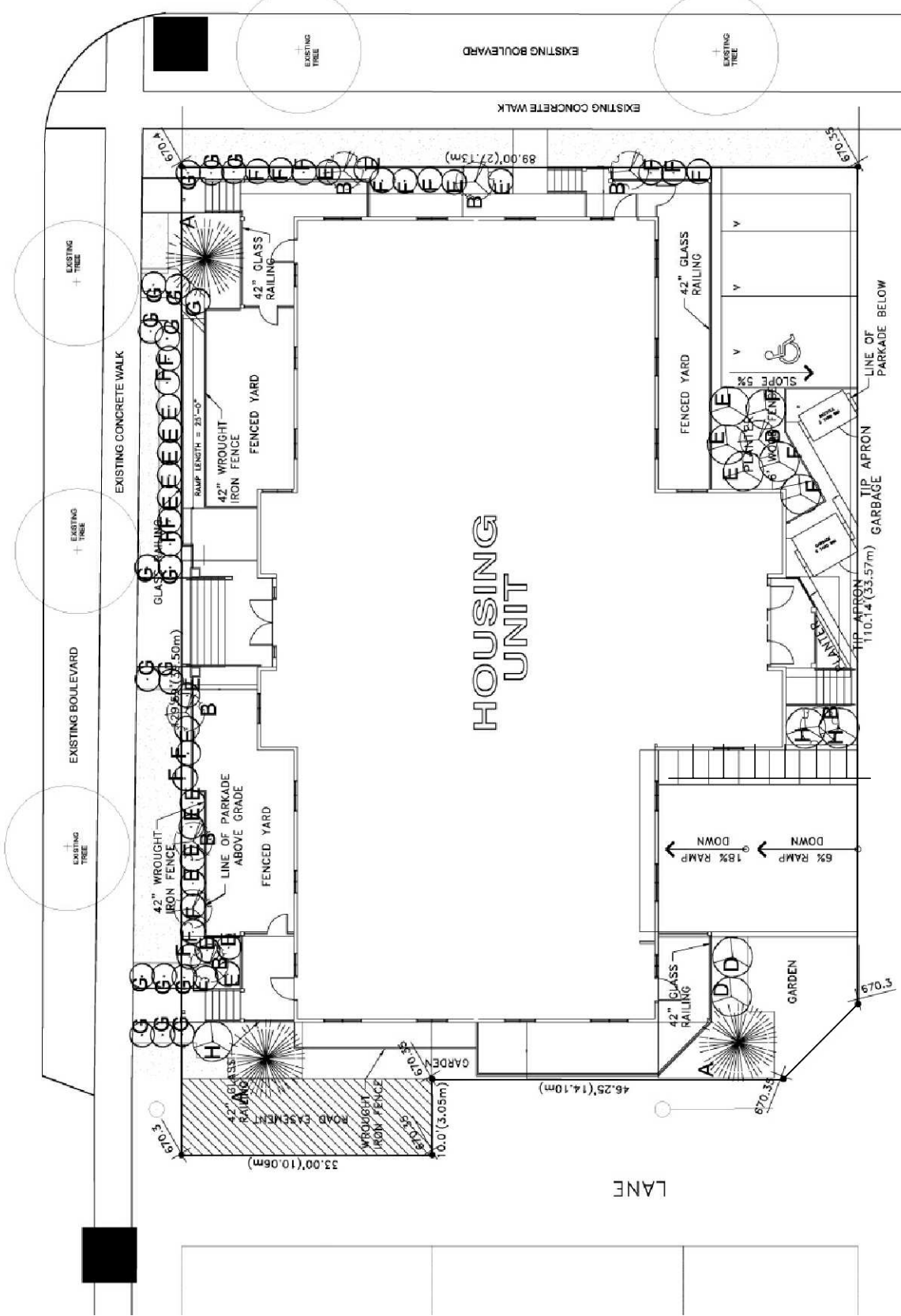
PARKADE

LANE

LANE

112 AV

94 ST



EDMONTON ZONING BYLAWS

| AREA SQ.M. | CITY DESIGN STANDARD | TOTAL |
|-------------------|-------------------------------------|----------------------|
| 82 | 1 Tree/05 sq.m. 1 Shrub/15 sq.m. | 2 |
| 88 | 1 Tree/05 sq.m. 1 Shrub/15 sq.m. | 2 |
| 22 | 1 Tree/05 sq.m. 1 Shrub/15 sq.m. | 1 |
| 88 | 1 Tree/05 sq.m. 1 Shrub/15 sq.m. | 2 |
| TOTAL REQUIREMENT | | TREES 7 SHRUBS 17 |

PERIMETER PLANTING

| Deciduous Trees | Coniferous Trees | Shrubs |
|-----------------|------------------|-----------------------|
| 3 | 1 | 39 |
| 2 | 1 | 7 |
| 3 | 0 | 17 |
| 0 | 1 | 3 |
| TOTAL DESIGNED | | TREES 11 SHRUBS 66 |

SITE BOUNDARY

STREET LIGHT LOCATIONS

PLANT LIST

| KEY | QTY. | BOTANICAL NAME | COMMON NAME | SIZE | REMARKS |
|---------------|------|--------------------------|-------------------------|------------|-----------|
| TREES | | | | | |
| A | 3 | PINUS CONTORTA LATIFOLIA | LOGSPOLE PINE | 2500mm.Ht. | B&B |
| B | 5 | POPULUS TREMULA 'ERECTA' | SWEDISH COLUMNAR POPLAR | 50mm.Cal. | B&B |
| C | 3 | POPULUS TREMULA 'ERECTA' | SWEDISH COLUMNAR POPLAR | 75mm.Cal. | B&B |
| SHRUBS | | | | | |
| D | 2 | PHYSOCARPUS OPULIFOLIUS | GOLD NINEBARK | 900mm.Ht. | CONTAINER |
| E | 23 | EUONYMUS ALATA | DWARF BURNING BUSH | 450mm.Ht. | CONTAINER |
| F | 21 | SPIREA TRILOBATA | THREE LOBED SPIREA | 600mm.Ht. | CONTAINER |
| G | 18 | POTENTILLA 'RED ROBIN' | RED ROBIN POTENTILLA | 600mm.Ht. | CONTAINER |
| H | 3 | RIBES ALPINUM | ALPINE CURRANT | 900mm.Ht. | CONTAINER |

LEGEND

SOD ON 150mm. DEPTH TOPSOIL

19mm.DIA. WASHED ROCK ON FABRIC

Unit Wall

Mulch-19mm. dia. washed rock on filter fabric.

100mm x 200mm galvanized gang plate-both sides

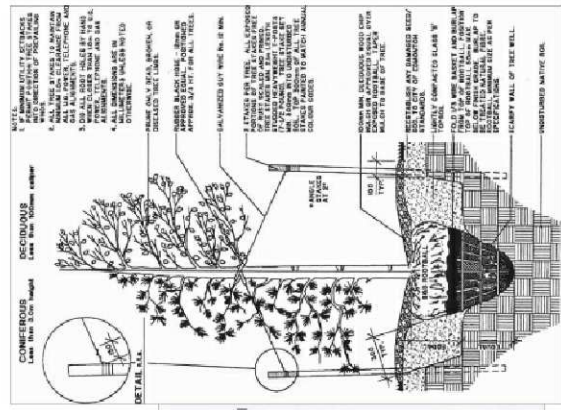
50mm x 150mm PT wood edger, set vertically

25mm x 50mm wood stake, 450mm in length, set straight 1200mm O.C.

Compacted subgrade

203mm wide Sod on 150mm depth topsoil

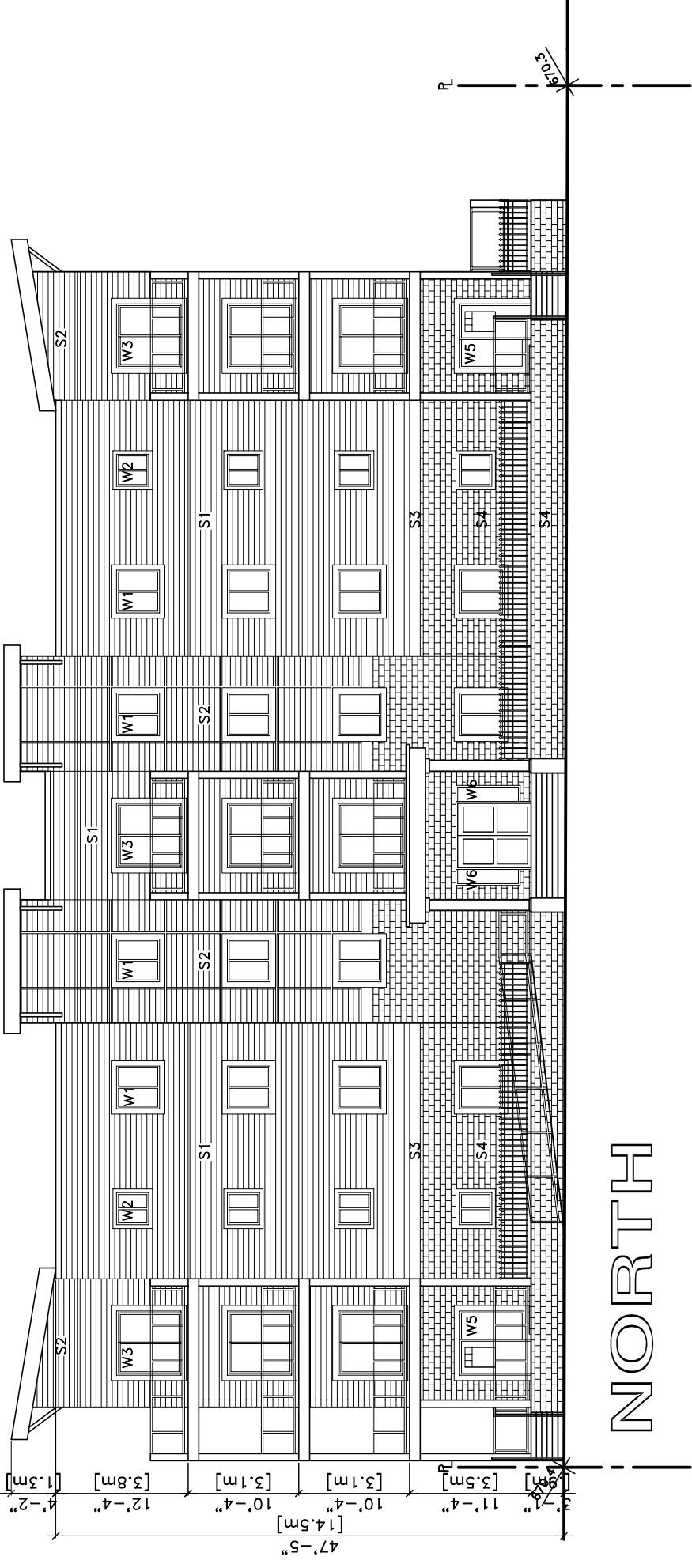
TYPICAL WOOD EDGER ASSEMBLY



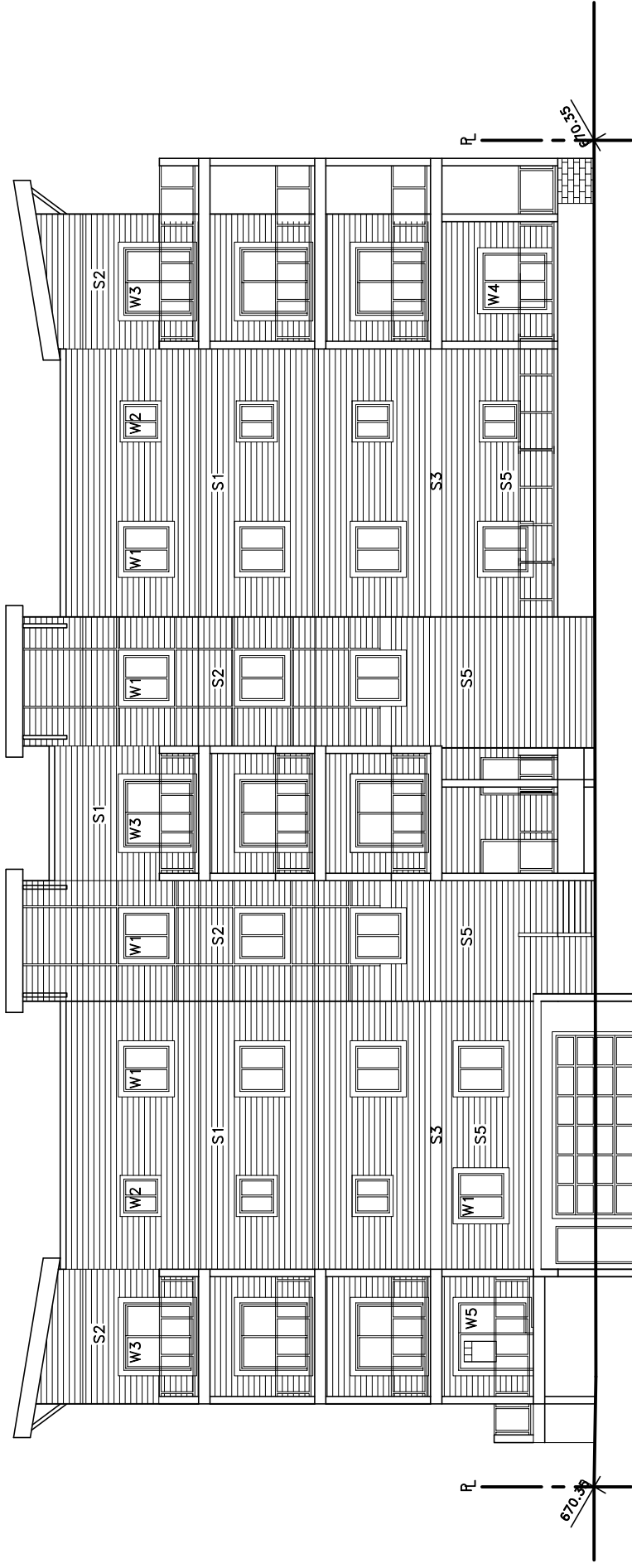
TECHNICAL SPECIFICATIONS
PROJECT STANDARDS, SPECIFICATIONS AND DETAILS TO COMPLY WITH DESIGN & CONSTRUCTION STANDARDS FOR THE CITY OF EDMONTON (2004)
FOLLOW THE LINES
NON-PERMANENT & PERMANENT AGREEMENTS/Design & Construction Standards for the City of Edmonton
VOLUME 1 - GENERAL
VOLUME 5 - LANDSCAPE
NON-PERMANENT SPECIFICATION SECTIONS:
02100 MULCHES
02210 COLOR COATING OF T-SHANK TREE STAKES
02230 TREES, SHRUBS AND GROUND COVERS

MAINTENANCE NOTE:
ALL WATERING OF PLANT MATERIAL AND GRASS SHALL BE DONE BY CONVENTIONAL HOSE METHOD.

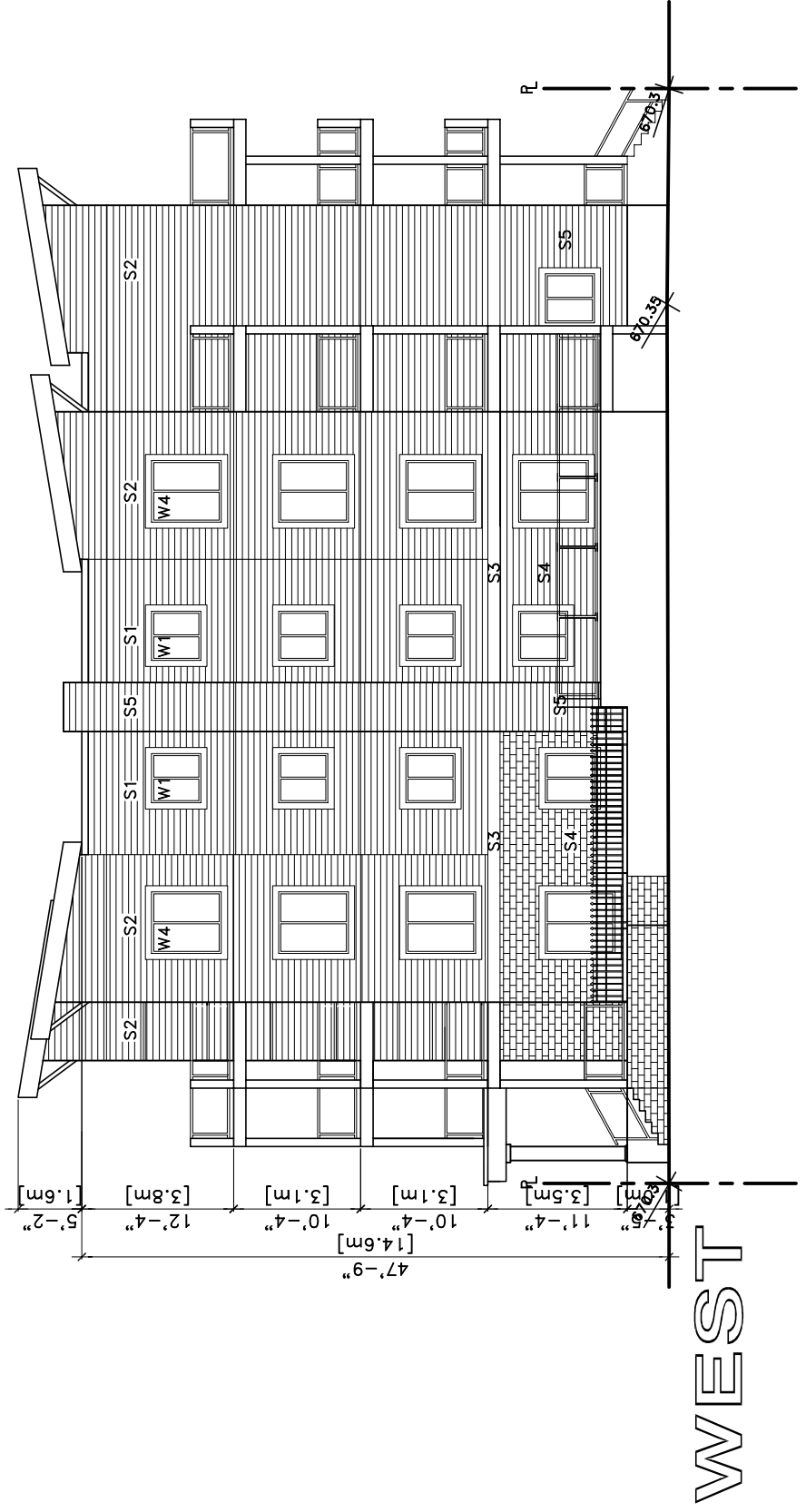
DRAWING REVISED DECEMBER 20, 2011
REVISION 1- ADJUSTED PLANTING TO MEET WITH GARBAGE AREA AND PARKING.
DRAWING REVISED JANUARY 18, 2012
REVISION 1- ADDED REVISED SITE PLAN SHOWING RAILING TYPES, FENCES AND STREET LIGHTS.



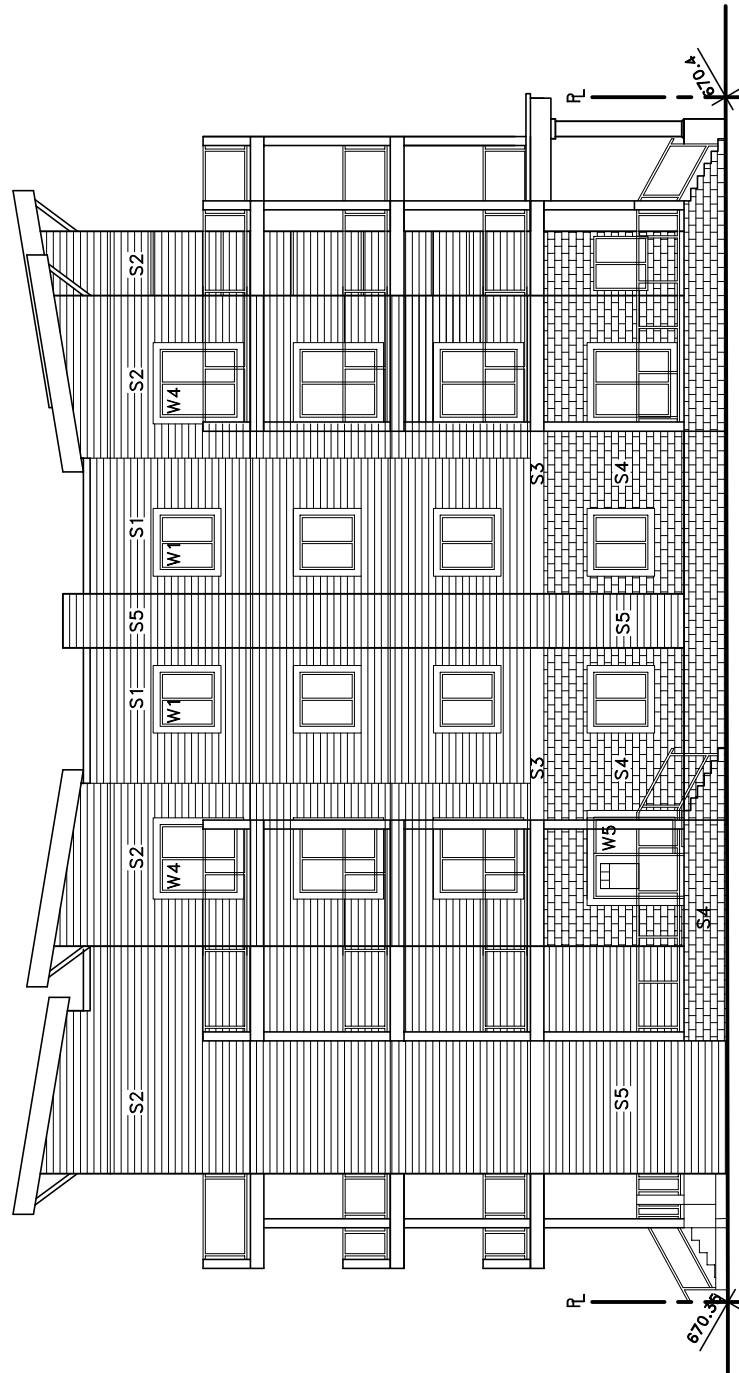
NORTH



SOUTH



WEST



EAST