

Freestanding sign located here

98th Ave

111 St.

Laneway

Relocated
Ross
House

Pocket
Garden

Proposed
2 Storey
Podium

Proposed
2 Storey
Podium

Main
Entrance

Proposed
95m Tower

Loading
Space

UG Parking
Access

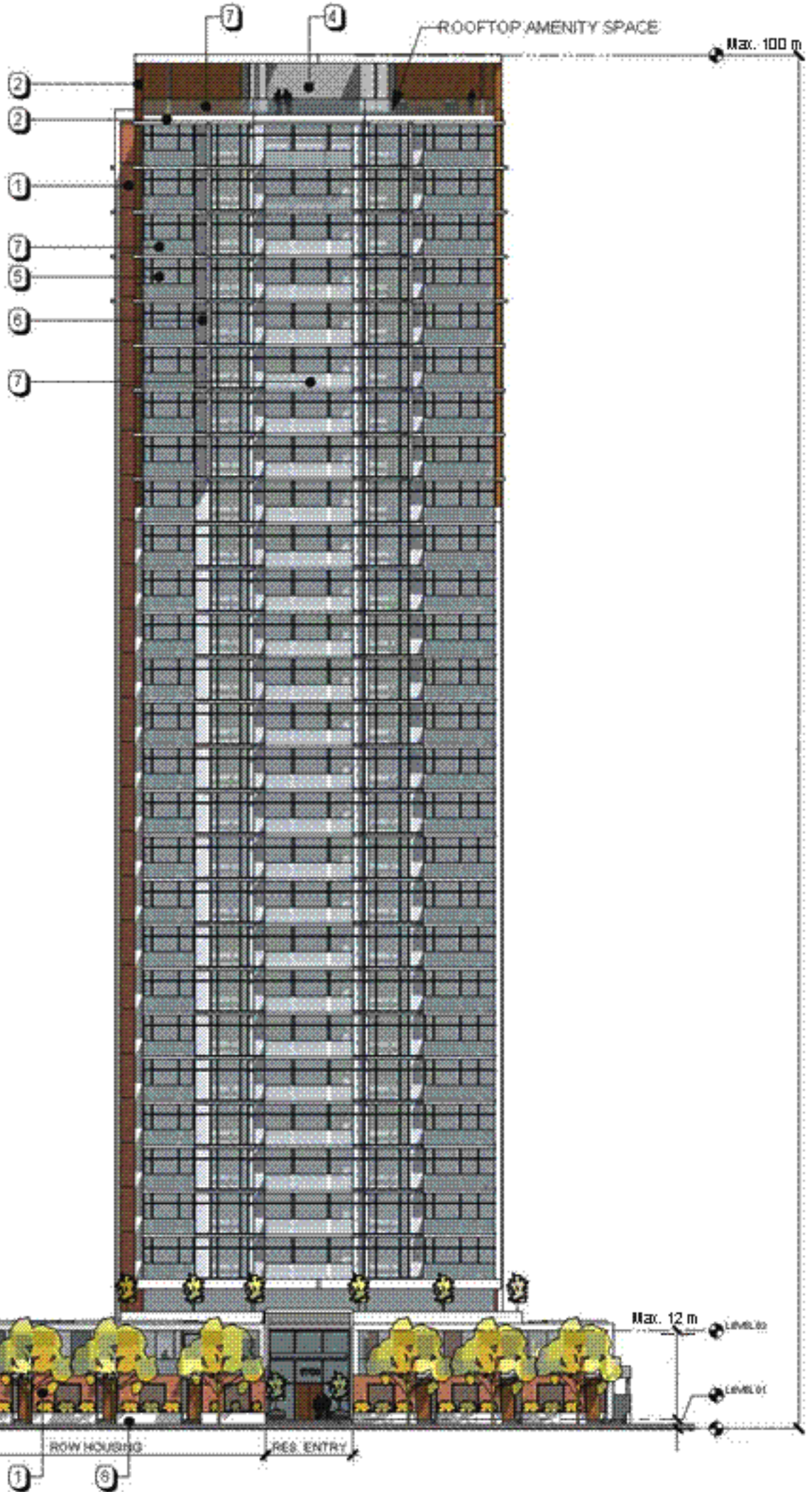
9717
Parking
Ramp

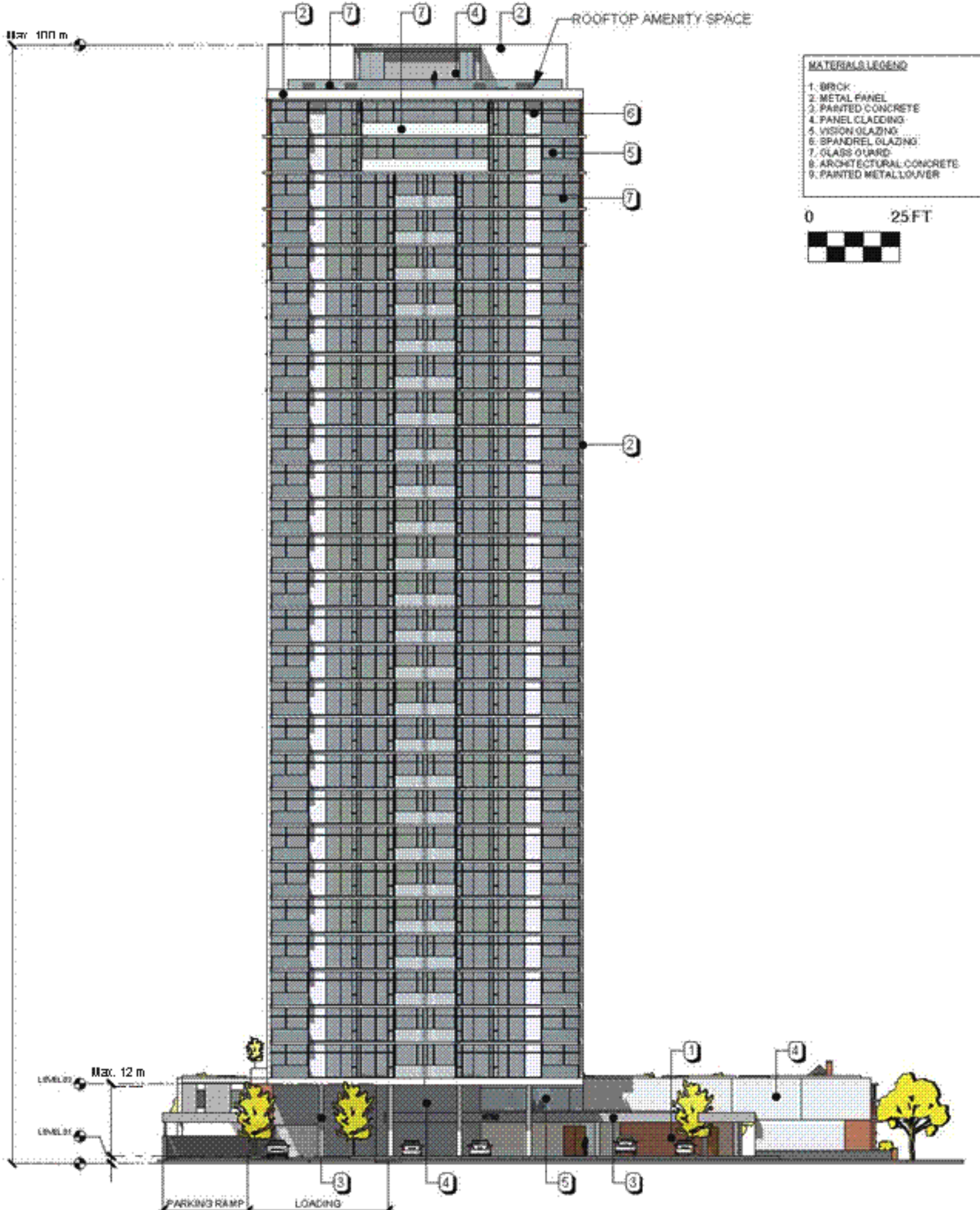
SITE PLAN



- MATERIALS LEGEND**
- 1. BRICK
 - 2. METAL PANEL
 - 3. PAINTED CONCRETE
 - 4. PANEL CLADDING
 - 5. VISION GLAZING
 - 6. SPANDREL GLAZING
 - 7. GLASS GUARD
 - 8. ARCHITECTURAL CONCRETE
 - 9. PAINTED METAL LOUVER

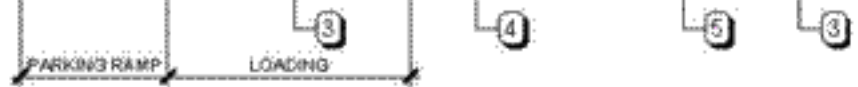
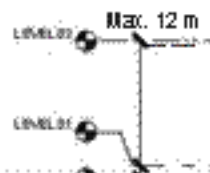
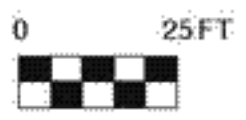
0 25 FT





MATERIALS LEGEND

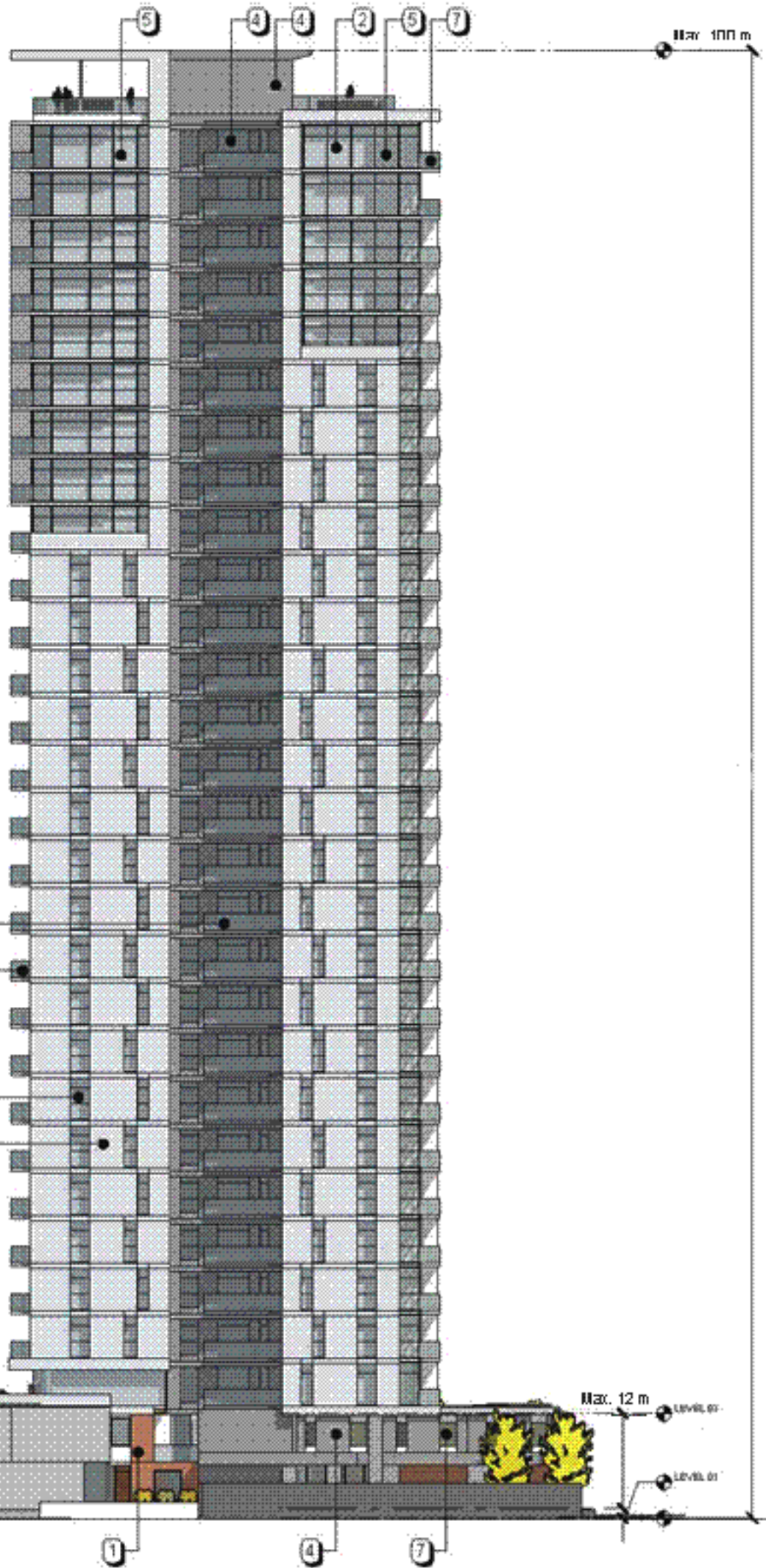
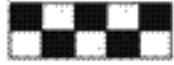
1. BRICK
2. METAL PANEL
3. PAINTED CONCRETE
4. PANEL CLADDING
5. VISION GLAZING
6. SPANDREL GLAZING
7. GLASS CURD
8. ARCHITECTURAL CONCRETE
9. PAINTED METAL LOUVER



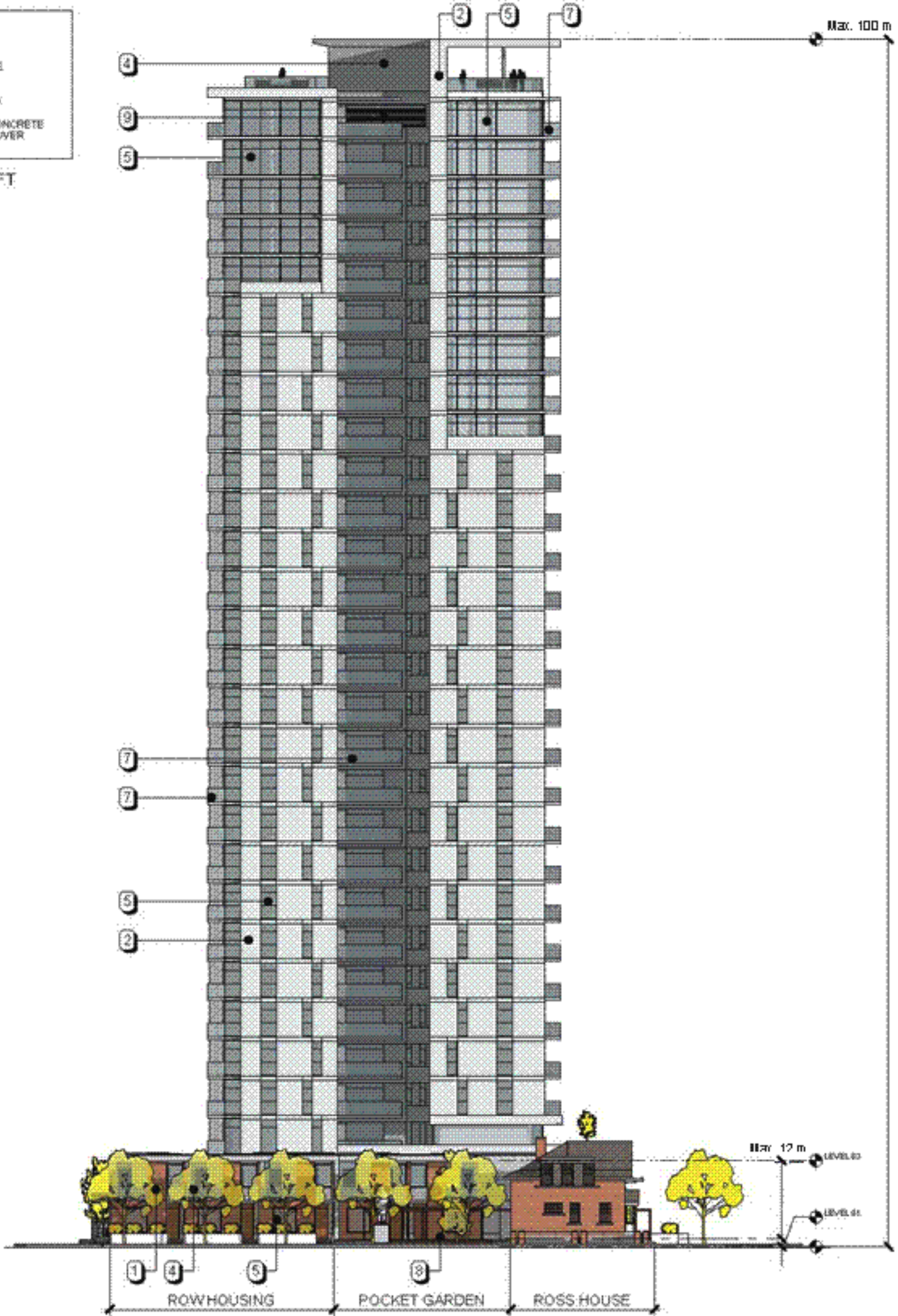
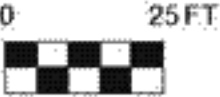
MATERIALS LEGEND

- 1. BRICK
- 2. METAL PANEL
- 3. PAINTED CONCRETE
- 4. PANEL CLADDING
- 5. VISION GLAZING
- 6. SPANDREL GLAZING
- 7. GLASS GUARD
- 8. ARCHITECTURAL CONCRETE
- 9. PAINTED METAL LOUVER

0 25 FT



- MATERIALS LEGEND**
- 1. BRICK
 - 2. METAL PANEL
 - 3. PAINTED CONCRETE
 - 4. PANEL CLADDING
 - 5. VISION GLAZING
 - 6. SPANDREL GLAZING
 - 7. GLASS GUARD
 - 8. ARCHITECTURAL CONCRETE
 - 9. PAINTED METAL LOUVER



98th Ave

Setback Line

1.5 M

1.5 M

Ross House

Pocket Garden

14.5 M

Proposed 2 Storey Podium

2 M

24 M

Proposed 2 Storey Podium

Laneway

Proposed 100 m building

28.6 M

Main Entrance

10 M

24.7 M

10 M

3 M

Parking Ramp

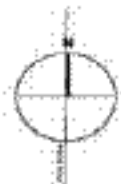
RAMP (2%)

DN

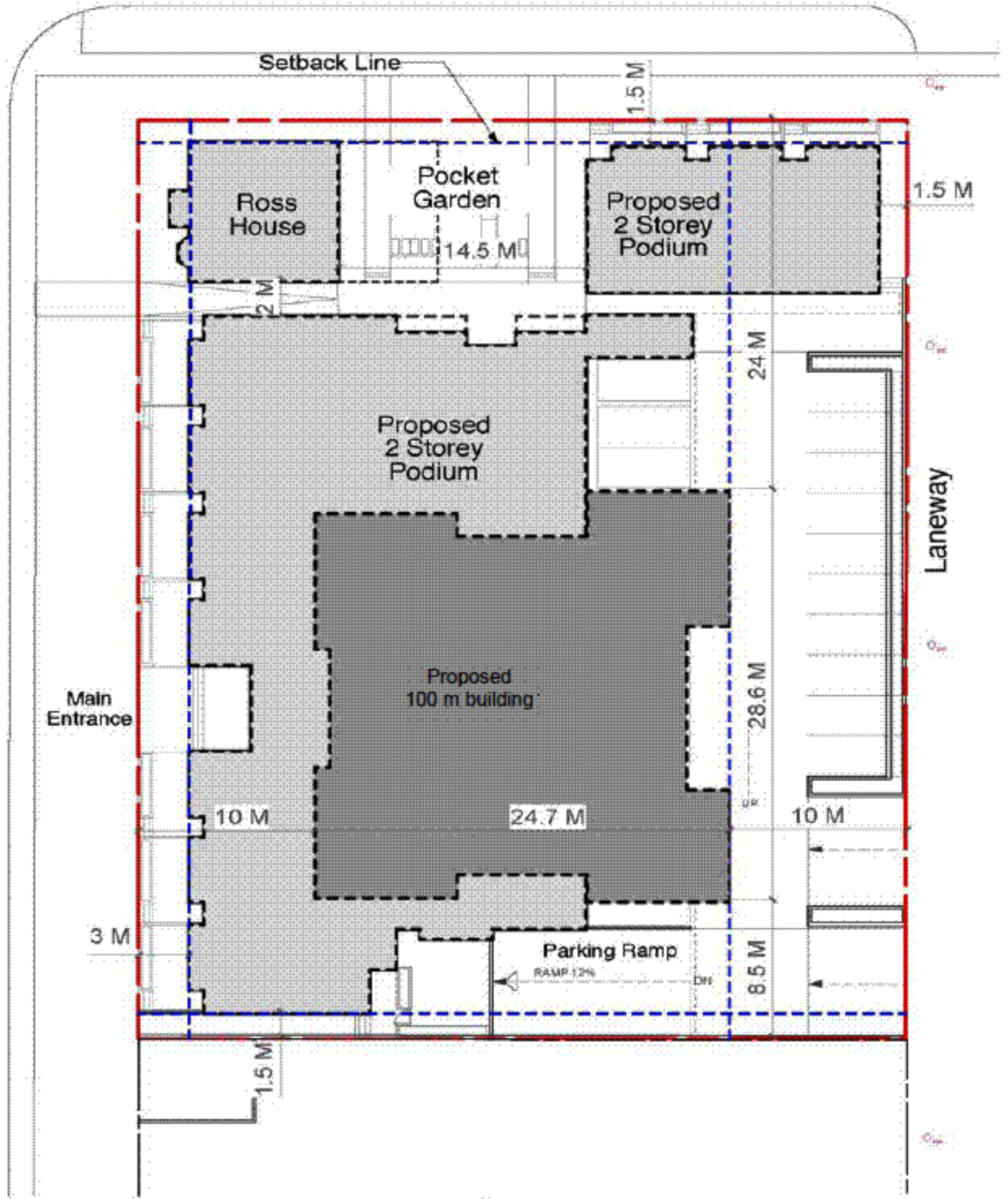
8.5 M

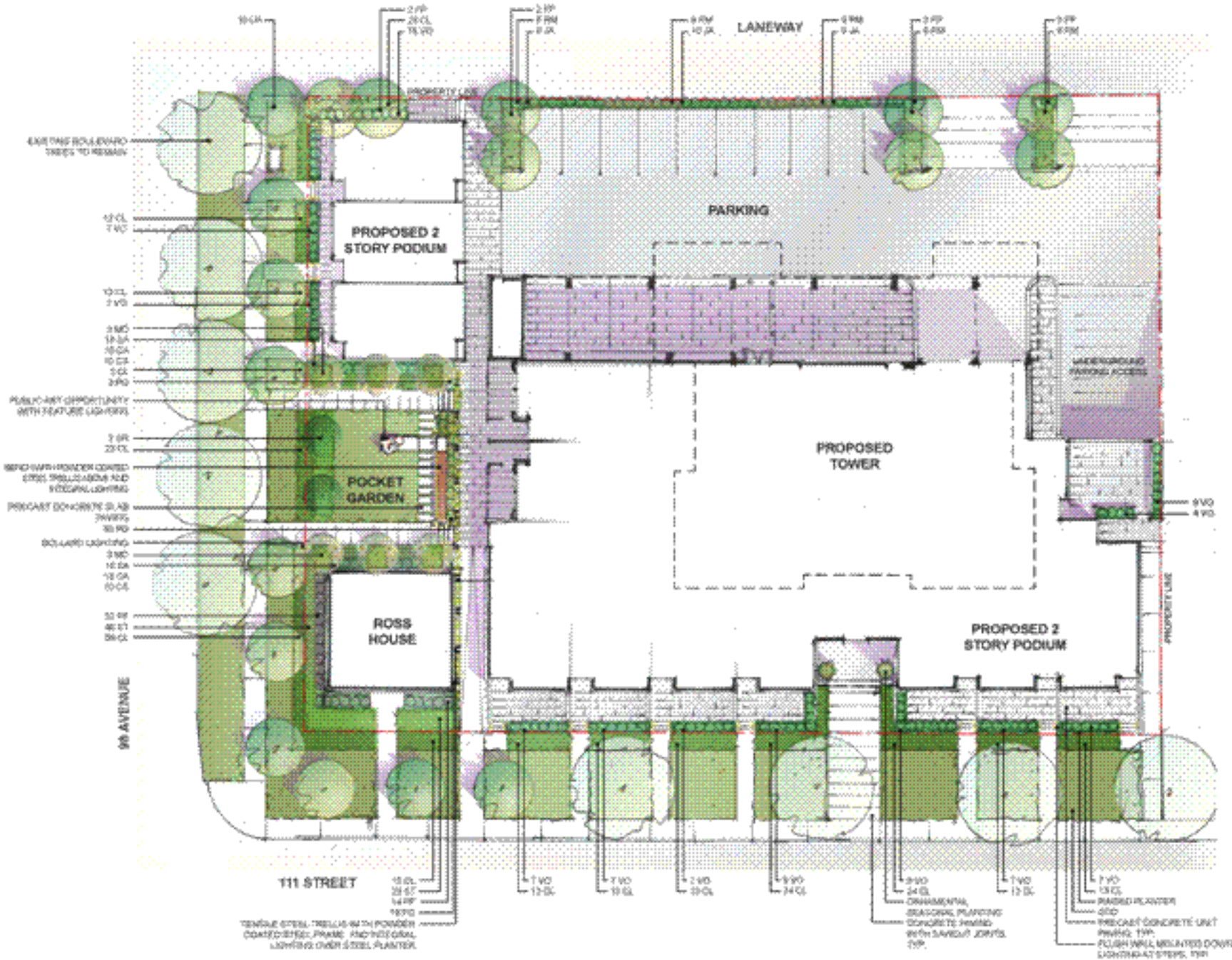
1.5 M

111 St.



0 25 50 FT





PLANTING SCHEDULE

DECIDUOUS TREES

Qty.	Botanical Name	Common Name	Comments
FP 8	<i>Fraxinus pennsylvanica</i> 'Prairie Spire'	Prairie Spire Ash	75mm cal. min., 4.5m ht. min., B&B
MD 8	<i>Malus</i> 'Doigo'	Doigo Crab Apple	85mm cal. min., 3.0m ht. min., B&B
SR 2	<i>Styringia reticulata</i> 'Ivory Silk'	Ivory Silk Japanese Tree Lilac	75mm cal. min., 4.0m ht. min., B&B
UA 10	<i>Ulmus americana</i> 'Brandon'	Brandon Elm	75mm cal. min., 4.5m ht. min., B&B

CONIFEROUS SHRUBS

JA 28	<i>Juniperus sibirica</i> 'Arcadia'	Arcadia Juniper	60cm spr. min., #5 container
-------	-------------------------------------	-----------------	------------------------------

DECIDUOUS SHRUBS

CS 20	<i>Cornus sericea</i> 'Silver and Gold'	Yellow Twig Dogwood	65cm ht. min., 5 major basal branches
CA 28	<i>Cornus alba</i> 'Sibirica'	Siberian Coral Dogwood	65cm ht. min., 5 major basal branches
CL 267	<i>Cotoneaster acutifolius lucidus</i>	Brandon Elm	50cm ht. min., #5 container
PF 46	<i>Potentilla fruticosa</i> 'Abbotswood'	Abbotswood Potentilla	50cm ht. min., #5 container
RM 26	<i>Rosa acicularis</i> 'Morden Centennial'	Morden Centennial Rose	65cm ht. min., grade No. 1
ST 69	<i>Spiraea trilobata</i> 'Threelobe'	Threelobe Spiraea	50cm ht. min., #5 container
SA 30	<i>Symphoricarpos albus</i>	Snowberry	60cm ht. min., 5 major basal branches
VO 88	<i>Viburnum opulus</i> 'Nanum'	Dwarf European Cranberry	50cm ht. min., #5 container

PERENNIALS

PQ 51	<i>Pachynotus quinquefolia</i>	Virginia Creeper	2 year min., 80cm O.C. spacing
-------	--------------------------------	------------------	--------------------------------

