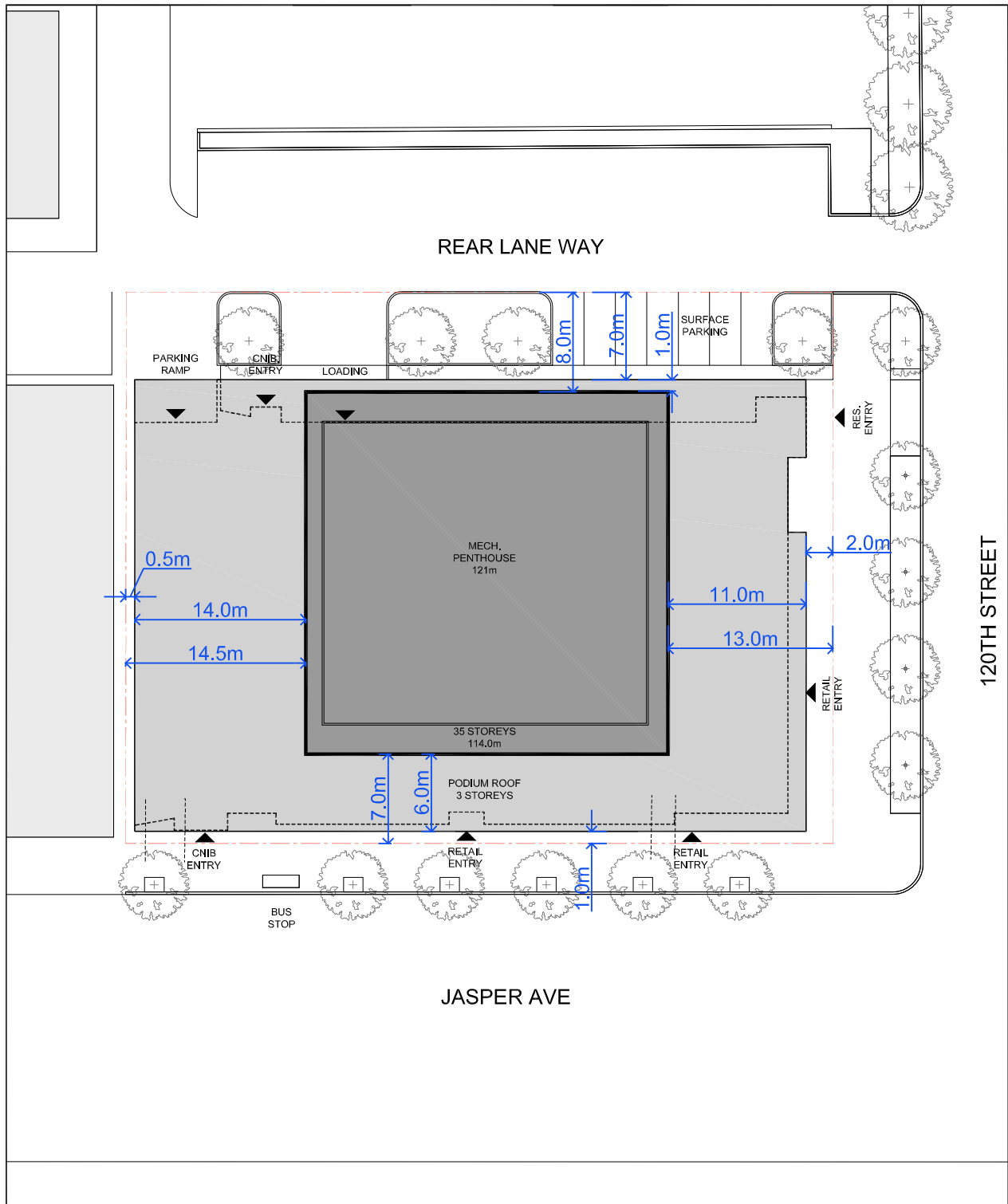


APPENDIX 1



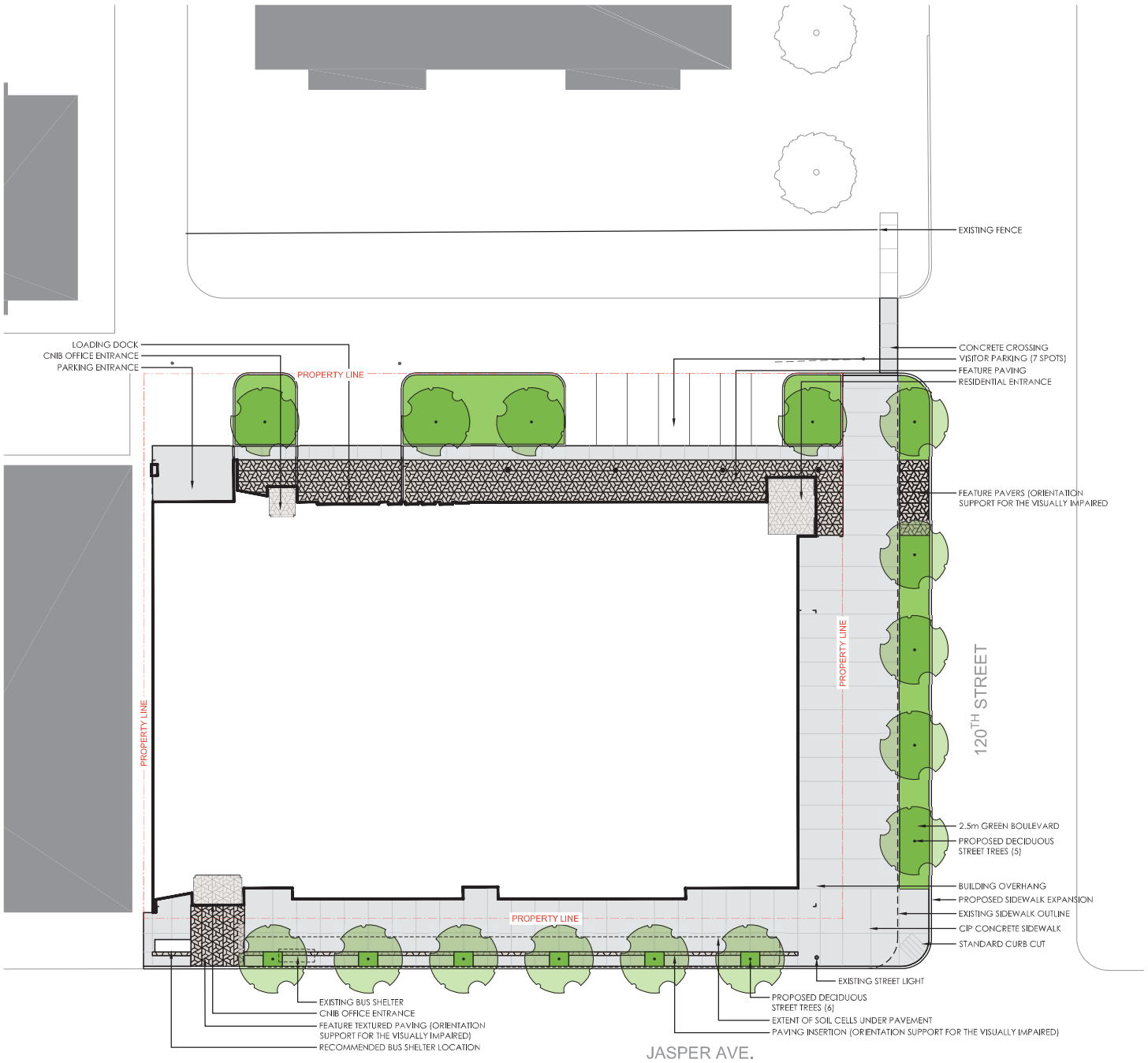
SITE PLAN

--- Subject Site



SCALE: 1:500

APPENDIX II



LANDSCAPE PLAN - GROUND FLOOR

--- Subject Site

SCALE: 1:500

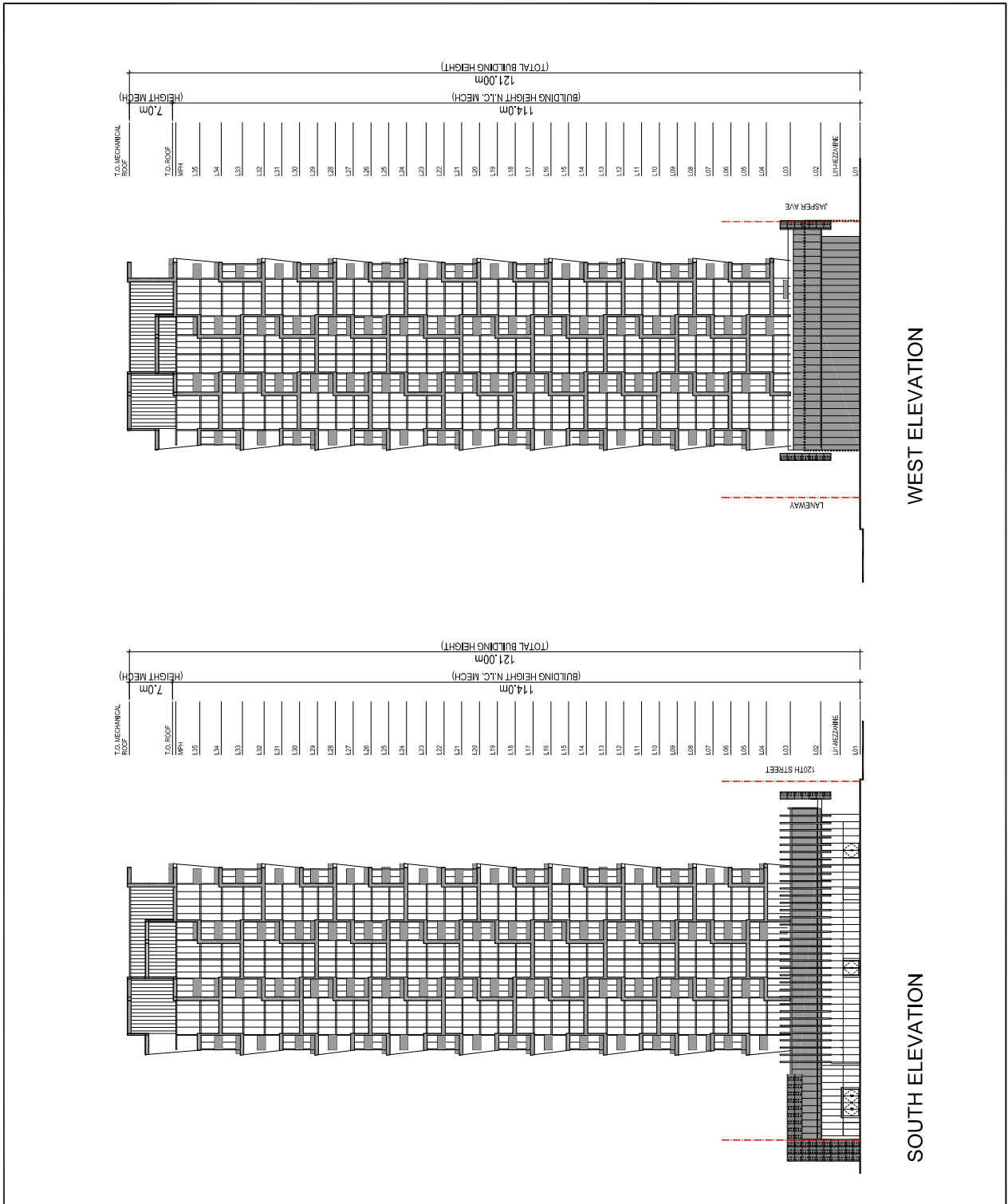


LANDSCAPE PLAN - 2ND / 3RD FLOORS

----- Subject Site

SCALE: 1:500

APPENDIX III

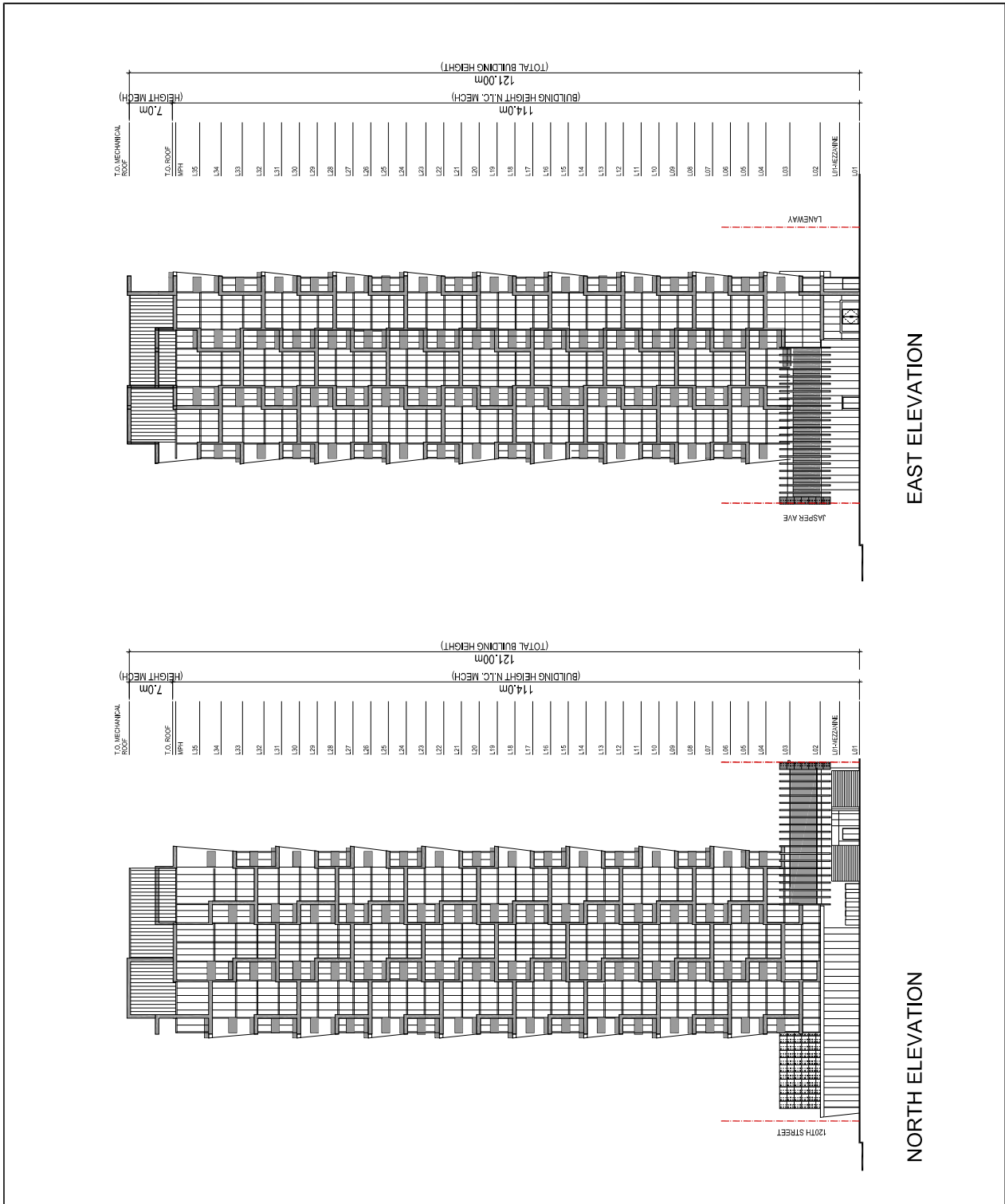


ELEVATIONS (PAGE 1 OF 2)

--- Subject Site

SCALE: 1:1000

APPENDIX III



ELEVATIONS (PAGE 2 OF 2)

--- Subject Site

SCALE: 1:1000

Sustainable Sites

Stormwater Management

The development shall implement a stormwater management plan that results in a 20% decrease in the rate and quantity of storm water runoff when compared to the existing site.

Alternative Transportation

At least two parking spaces shall be provided for a car share program.

Alternative Transportation

The maximum amount of bicycle parking (as per the Edmonton Zoning Bylaw) shall be provided at grade or within the underground parkade.

Heat Island Effect

The development shall use a high Solar Reflective Index (SRI) material for hardscape within the landscape design.

Heat Island Effect

The building roof shall use a high Solar Reflective Index (SRI) material, be vegetated, or a combination of the two.

Construction Activity Pollution Prevention

The development shall implement an erosion and sedimentation control plan.

Light Pollution Reduction

The development shall minimize light trespass from the building and site onto neighbouring properties, with the exception of adjacent public areas requiring lighting for reasons of security.

Water Efficiency

Water Efficient Landscaping

The development shall apply efficient irrigation strategies and use drought tolerant landscaping to reduce potable water consumption.

Water Use Reduction

The building shall use plumbing fixtures that use 20% less water than the baseline water use.

Energy and Atmosphere

Energy Efficient Lighting

Lighting in all residential common areas and commercial areas shall exceed the efficiency specified in the Model National Energy Code for Buildings.

Utility Metering

The development shall include sub-metering of the residential suites.

Materials and Resources

Storage and Collection of Recyclables

Residential and commercial units shall be designed to accommodate space for recyclable waste collection internal to the building.

Materials Reuse

Plumbing fixtures from existing building shall be salvaged and donated to Habitat for Humanity ReStore (or other salvage building supply service) where feasible.

Construction Waste Management

Surplus construction materials shall be donated to Habitat for Humanity ReStore (or other salvage building supply service).

Indoor Environmental Quality

Low Emitting Materials

Low-emitting adhesives, sealants, paints, coatings, and flooring shall be used.

Environmental Tobacco Smoke Control

The owner shall prohibit smoking within the building and within 7.5m of entries and outdoor air intakes.

Day-lighting

The design shall provide adequate day-lighting in all regularly occupied spaces.
