

**APPENDIX I - SITE PLAN
WITH PARKING**

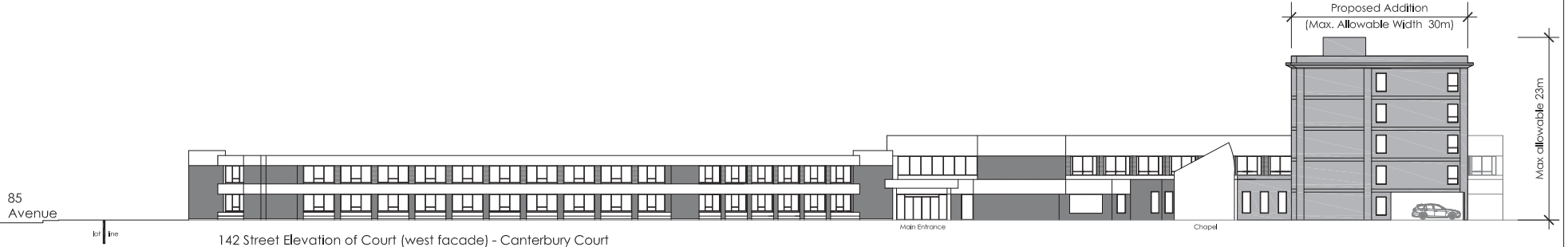


CANTERBURY FOUNDATION

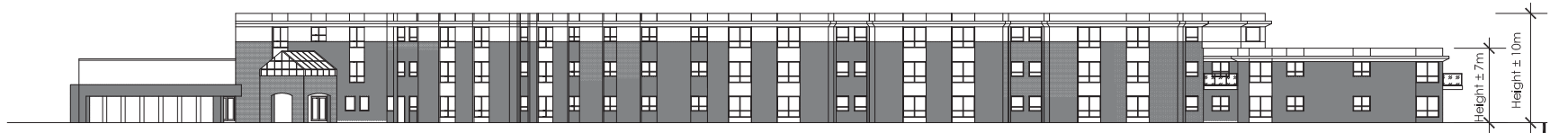
SCALE 1/64" = 1'-0"

bennett | architect inc.

4212 - 98 Street NW
Edmonton, Alberta T6E 6A1
Tel: 780.451.4376
info@bennettarchitect.ca



142 Street Elevation of Court (west facade) - Canterbury Court



142 Street Elevation (west facade) - Canterbury Manor



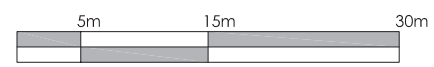
80th Avenue Elevation of Manor (south facade)



85th Avenue Elevation of Court (north facade)

Note: Facade of proposed addition to be developed in accordance with development regulations

APPENDIX II - ELEVATIONS

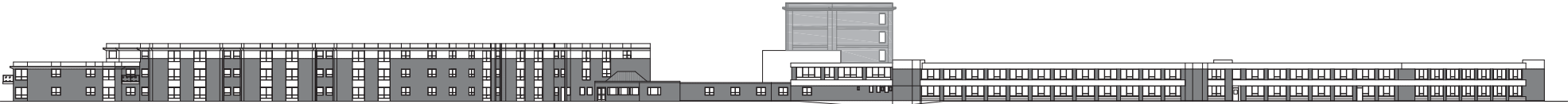


bennett architect inc.

4212 - 98 Street NW
 Edmonton, Alberta T6E 6A1
 Tel: 780.451.4376
 info@bennettarchitect.co



142 Street Elevation (overall west facade) - Canterbury Court & Canterbury Manor



141 Street Elevation (overall east facade) - Canterbury Court & Canterbury Manor

APPENDIX II - ELEVATIONS



