

APPENDIX B
SITE PLAN

EAUX CLAIRES ESTATE
NEIGHBOURHOOD PLAN

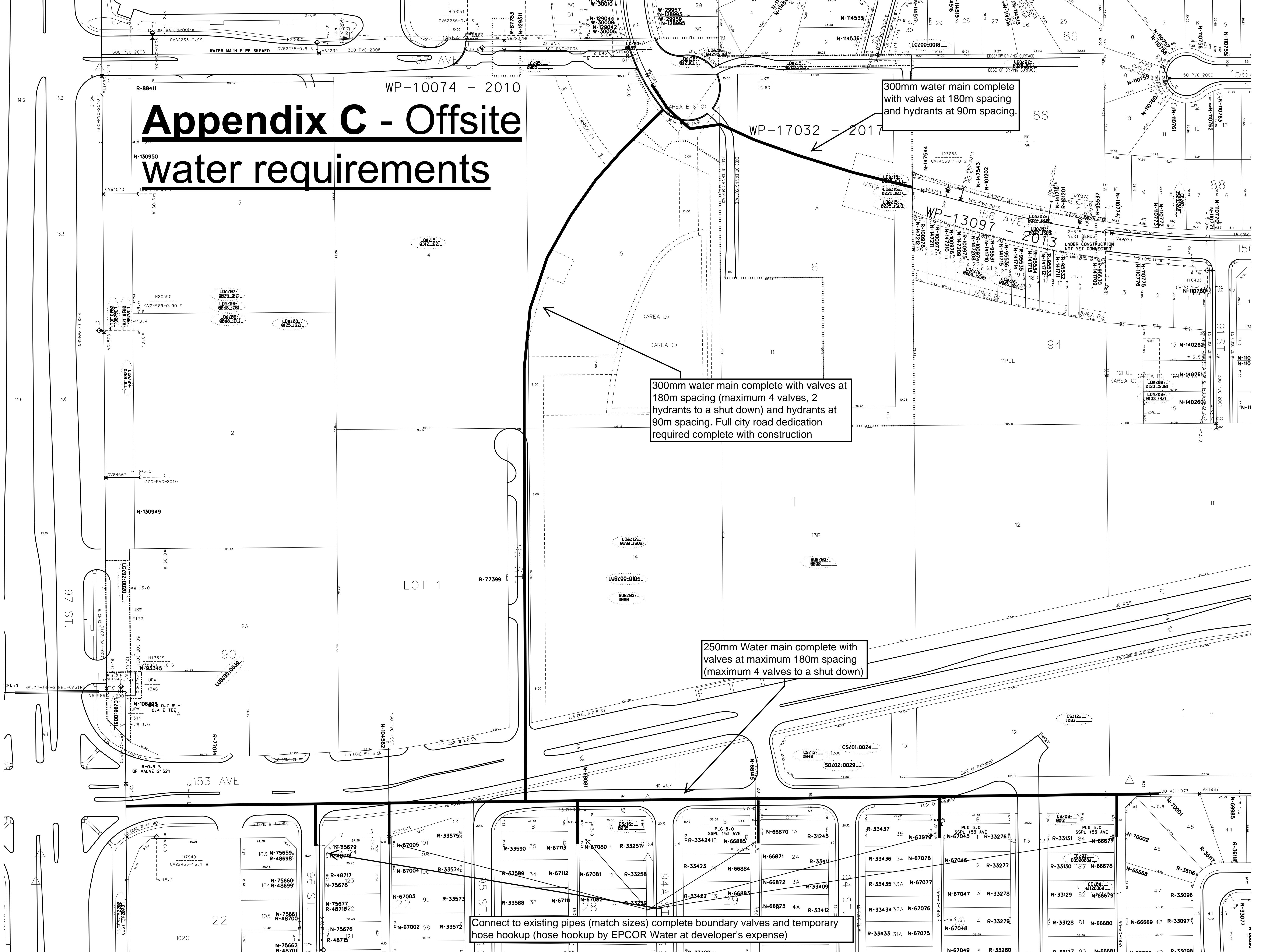
Appendix C - Offsite water requirements

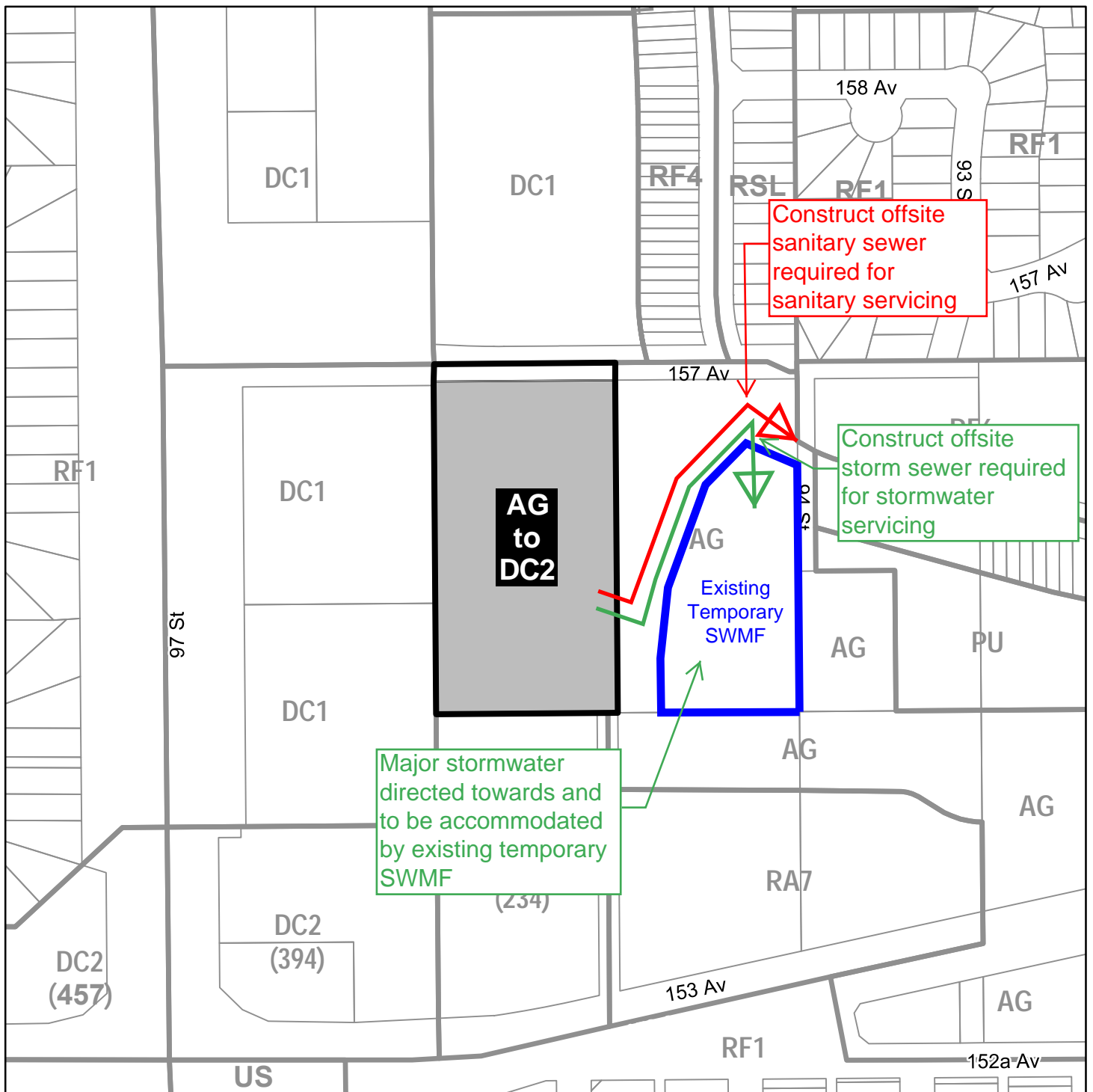
300mm water main complete with valves at 180m spacing and hydrants at 90m spacing.

300mm water main complete with valves at 180m spacing (maximum 4 valves, 2 hydrants to a shut down) and hydrants at 90m spacing. Full city road dedication required complete with construction

250mm Water main complete with valves at maximum 180m spacing (maximum 4 valves to a shut down)

Connect to existing pipes (match sizes) complete boundary valves and temporary hose hookup (hose hookup by EPCOR Water at developer's expense)





APPENDIX D - Offsite storm and sanitary sewer requirements



From: (AG) Agricultural Zone
To: (DC2) Site Specific Development Control Provision