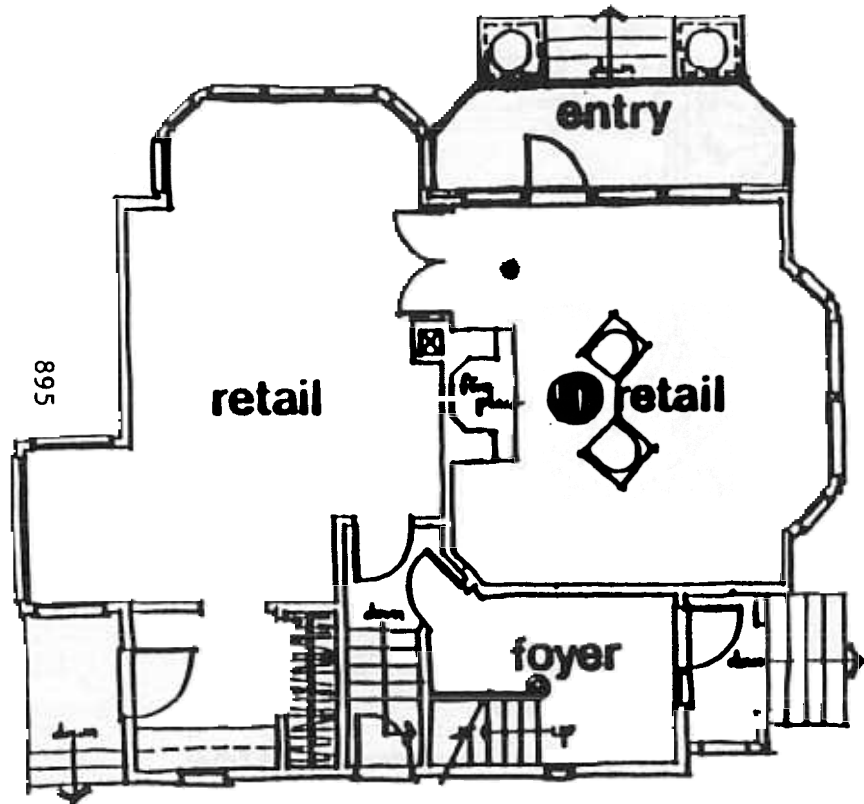


768

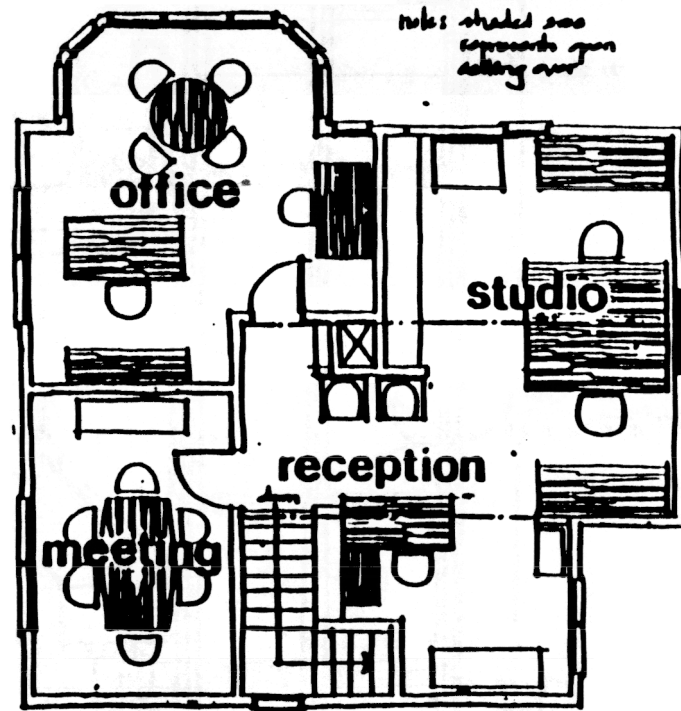
site plan 1" = 6 ft. (north)

1000000

COMMERCIAL RENOVATION to 10' 5" - 125 STREET



main floor plan 1/4" = 1 ft.
 725.5 sq ft. (gross leasable)
 (not including foyer and stairs)



2nd floor plan 1/4" = 1 ft.
 837.5 sq ft. (gross leasable)

COMMERCIAL RENOVATION to 10105 - 125 STREET