


Certified a true copy of Schedule
A as referred to in Bylaw No. 9564 (as amended)



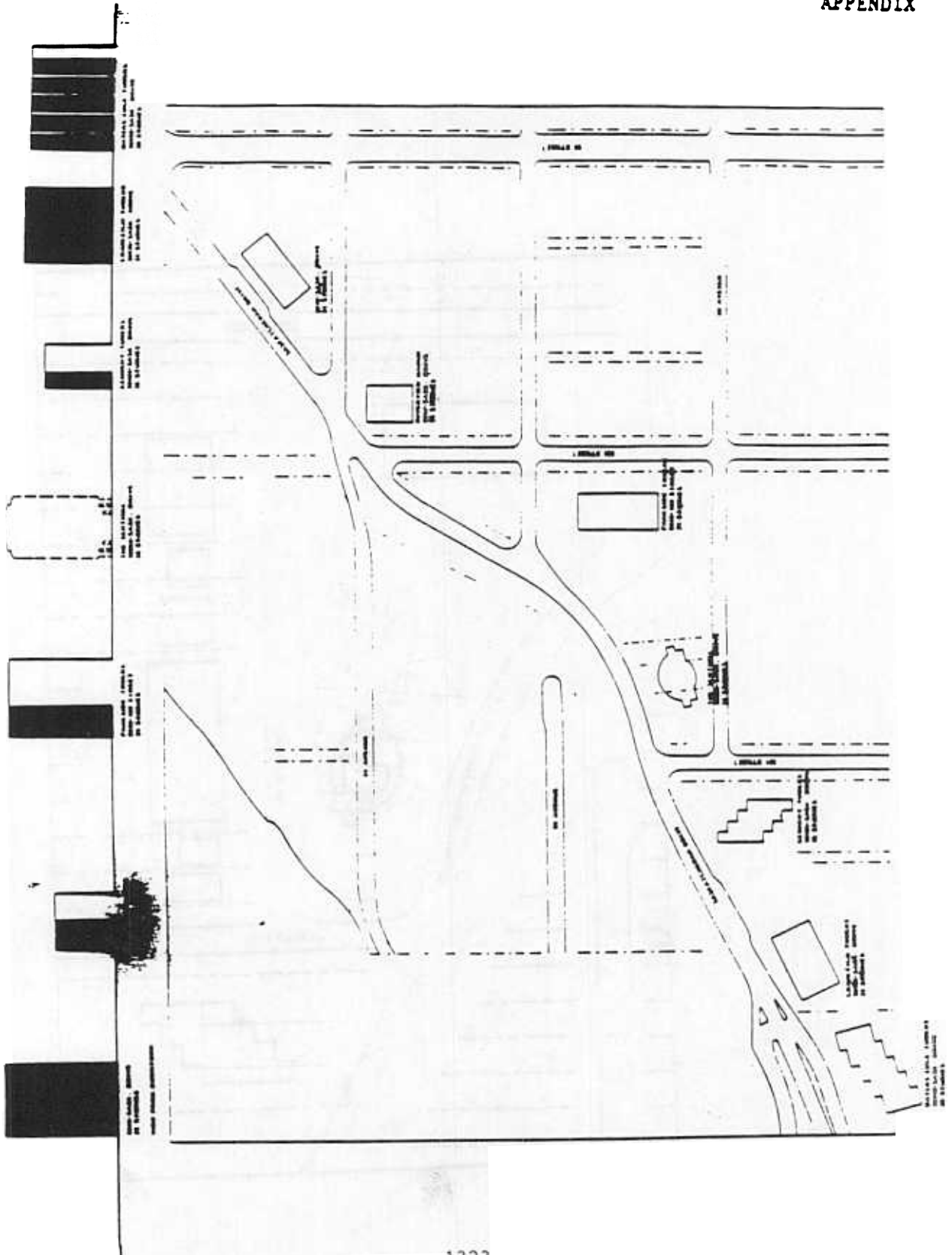
City Clerk

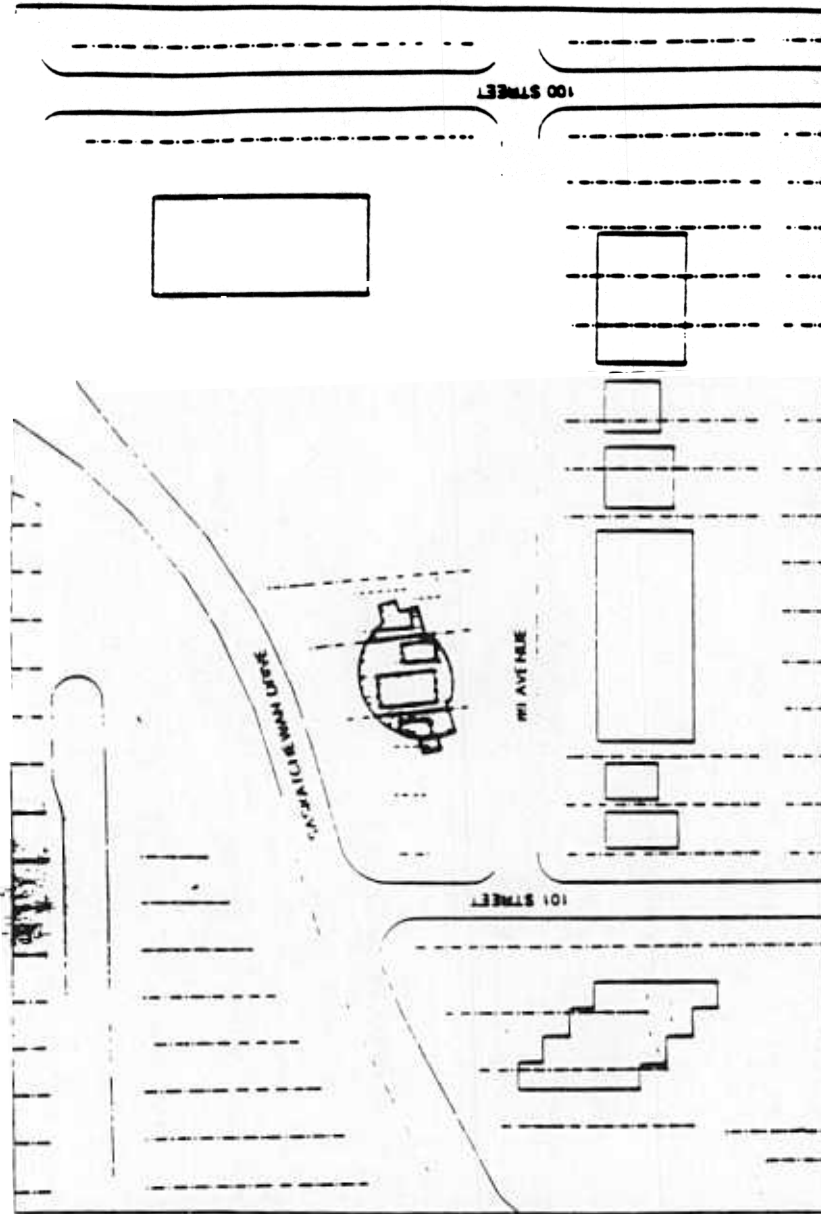
November 14, 1990

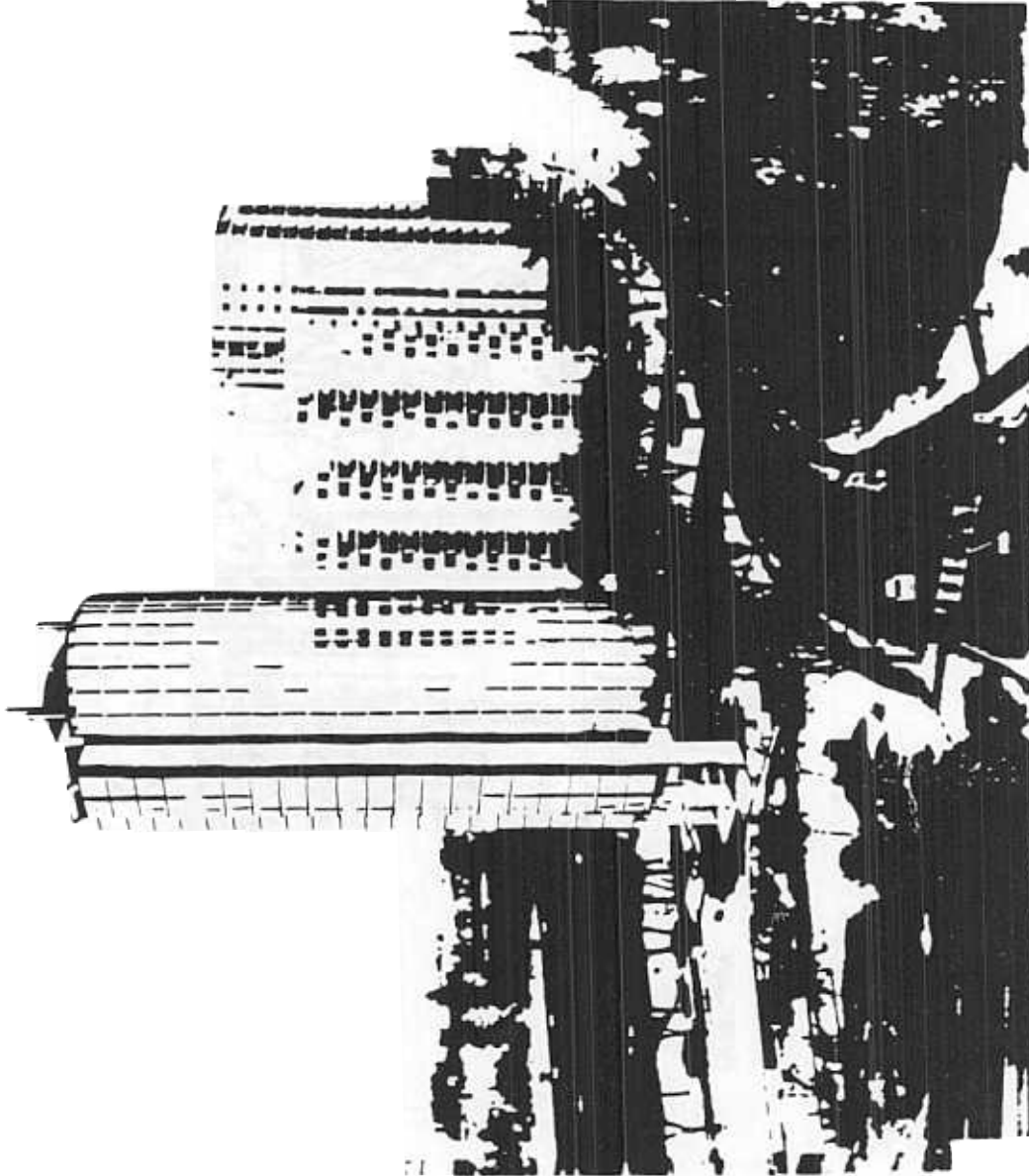
Barry Ashbee Architects Ltd
10001 177 Street
Edmonton, Alberta Canada
T5E 0A2
(403) 433-3100
(403) 433-3100

10001 177 Street
Edmonton, Alberta Canada
T5E 0A2
(403) 433-3100
(403) 433-3100

APPENDIX



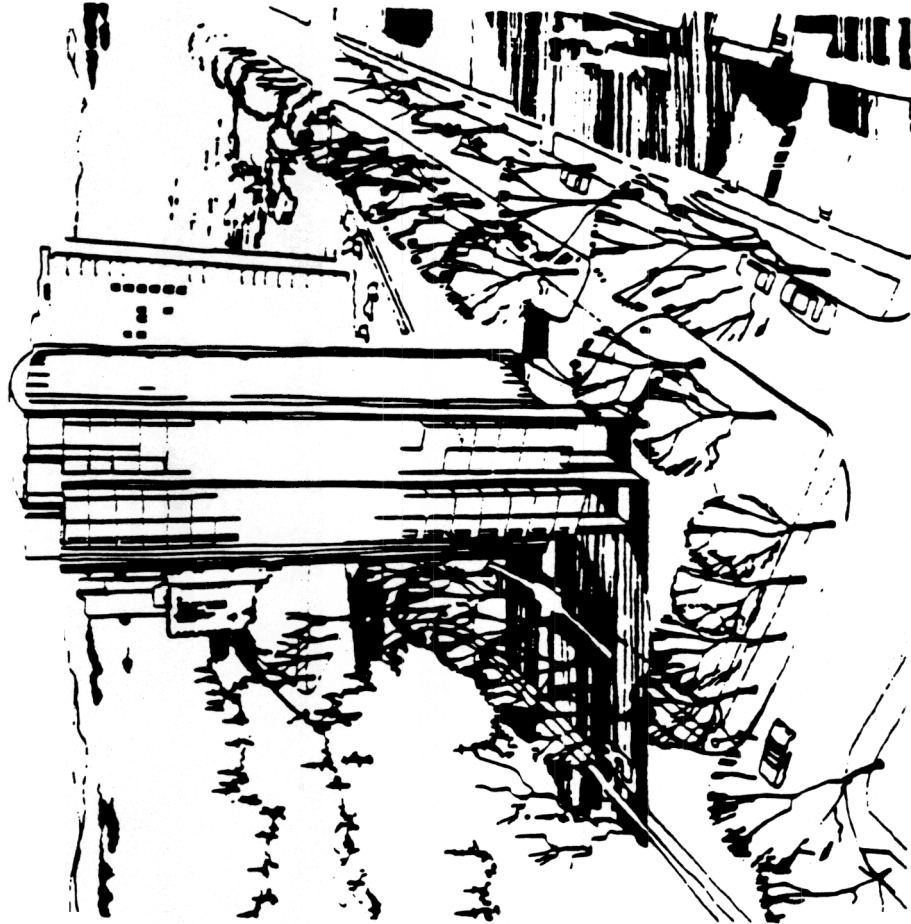




**THE
SENTINEL**

**10050 SASKATCHEWAN DRIVE
EDMONTON, ALBERTA**

Betty Adams Architects



Barry Johns Architects Ltd
114 St. George Street
Toronto, Ontario
M5R 1A5
Canada

114 St. George Street
Toronto, Ontario
M5R 1A5
Canada

114 St. George Street
Toronto, Ontario
M5R 1A5
Canada

114 St. George Street
Toronto, Ontario
M5R 1A5
Canada

114 St. George Street
Toronto, Ontario
M5R 1A5
Canada

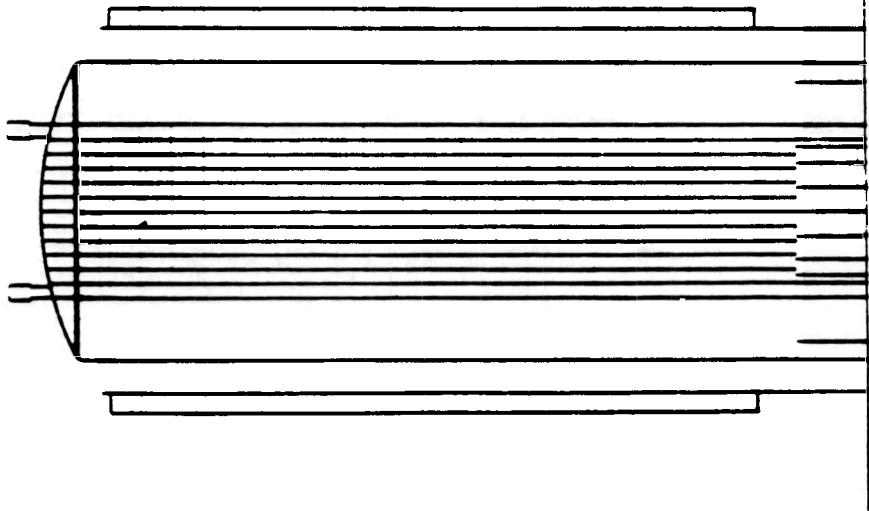
114 St. George Street
Toronto, Ontario
M5R 1A5
Canada

114 St. George Street
Toronto, Ontario
M5R 1A5
Canada

114 St. George Street
Toronto, Ontario
M5R 1A5
Canada

114 St. George Street
Toronto, Ontario
M5R 1A5
Canada

114 St. George Street
Toronto, Ontario
M5R 1A5
Canada



County Jobs Archive
All dates are in
MM/DD/YYYY
1/1/2018

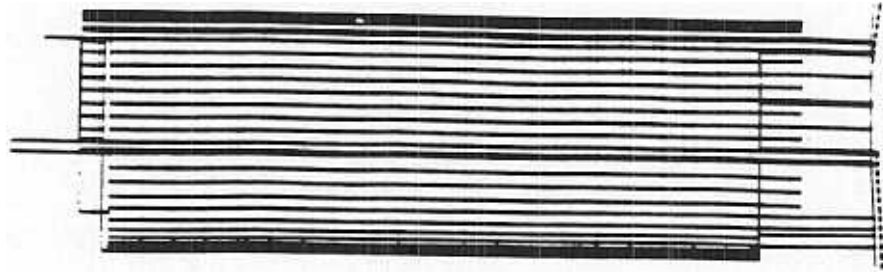
14/22

1

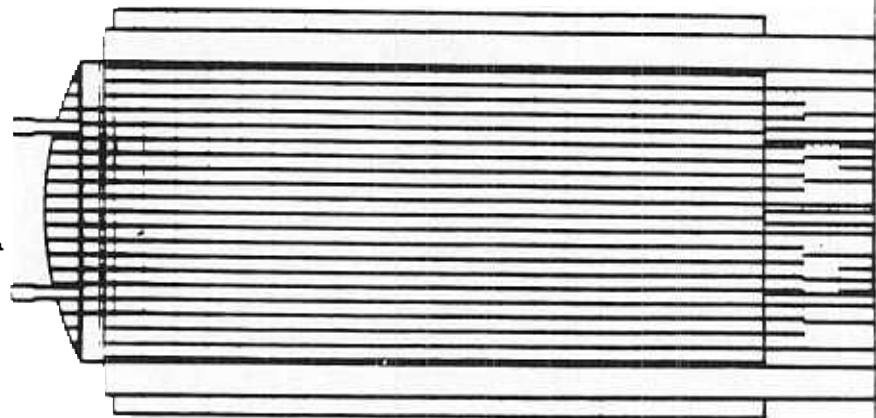
1/1/2018
1/1/2018
1/1/2018

1/1/2018

1/1/2018



1/1/2018
1/1/2018



1/1/2018

1/1/2018
1/1/2018



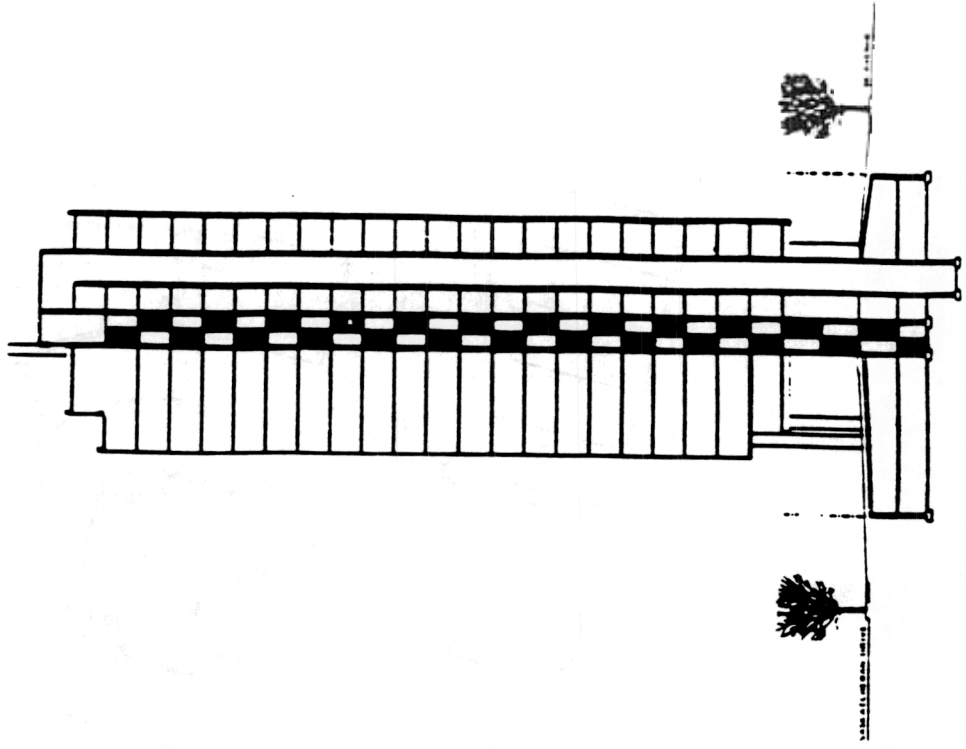
Barry Johnson Architects
1000 15th Street, N.W.
Washington, D.C. 20004
(202) 331-1111

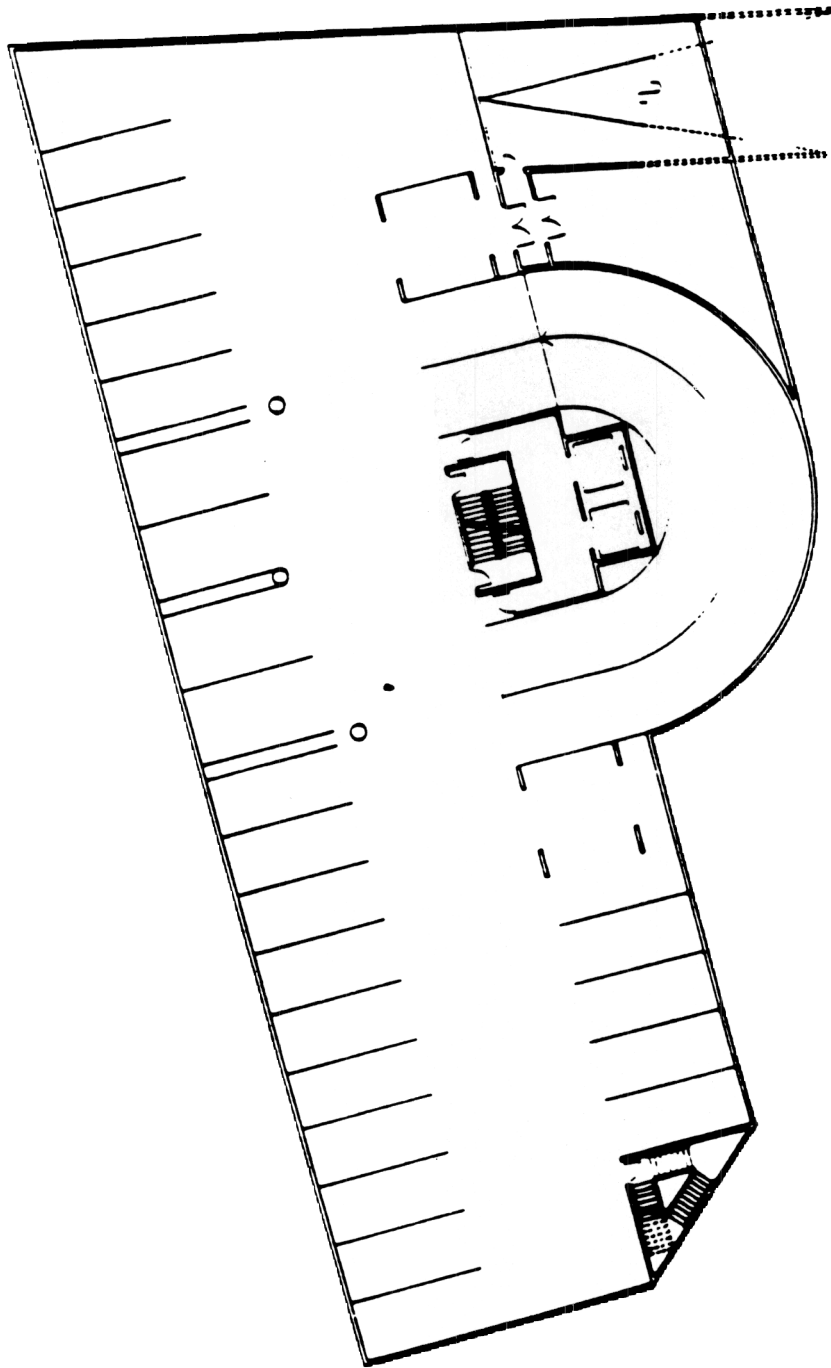
114

THE UNIVERSITY OF
MICHIGAN LIBRARY

1000 15th Street, N.W.
Washington, D.C. 20004
(202) 331-1111

1000 15th Street, N.W.
Washington, D.C. 20004
(202) 331-1111



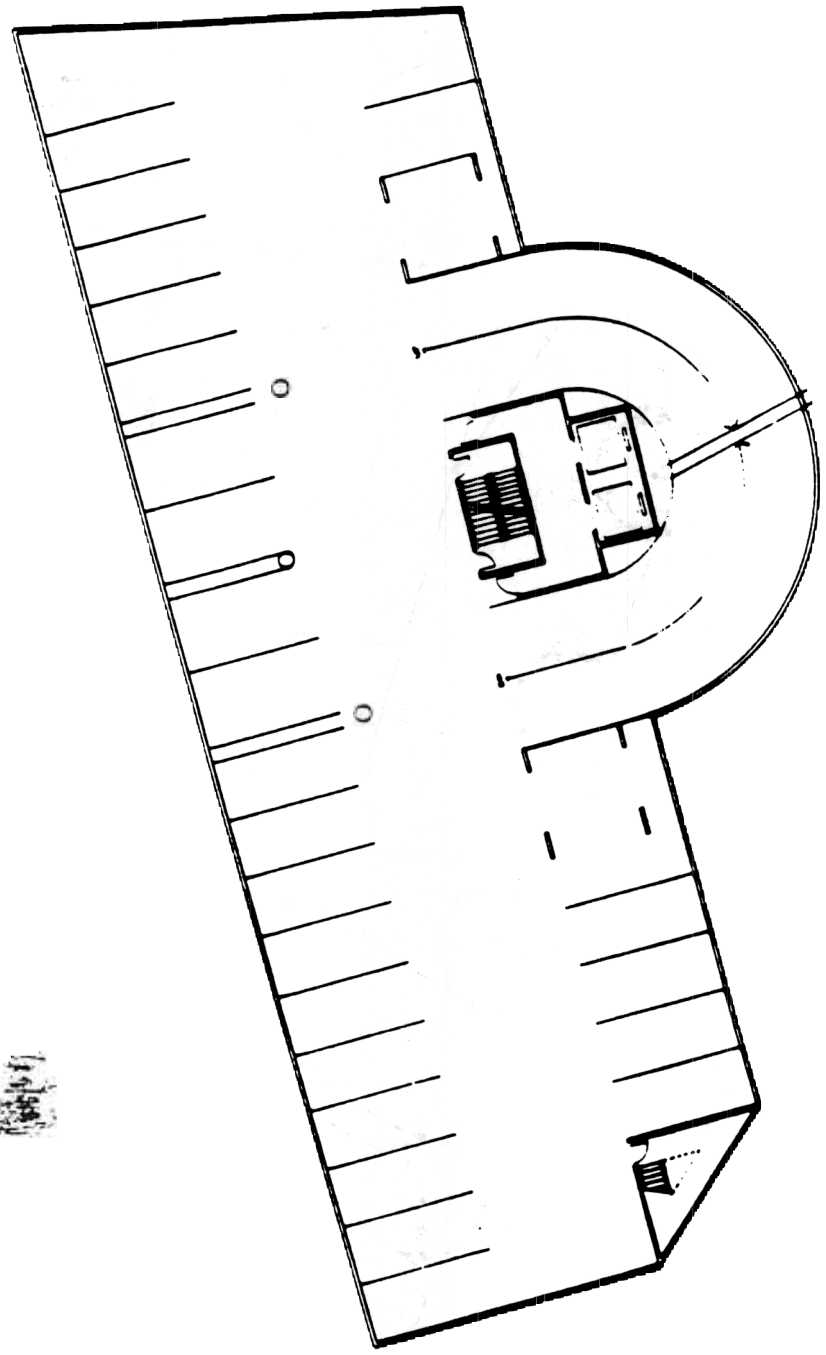


BARRY JONES ARCHITECTS
111 N. 4th St.
PO Box 100
Anchorage, Alaska 99501



1/2" = 1'-0"
1/8" = 1'-0"
1/16" = 1'-0"

Notes:
1. See site plan for location of building.
2. See site plan for location of parking spaces.
3. See site plan for location of landscaping.
4. See site plan for location of utility lines.
5. See site plan for location of easements.

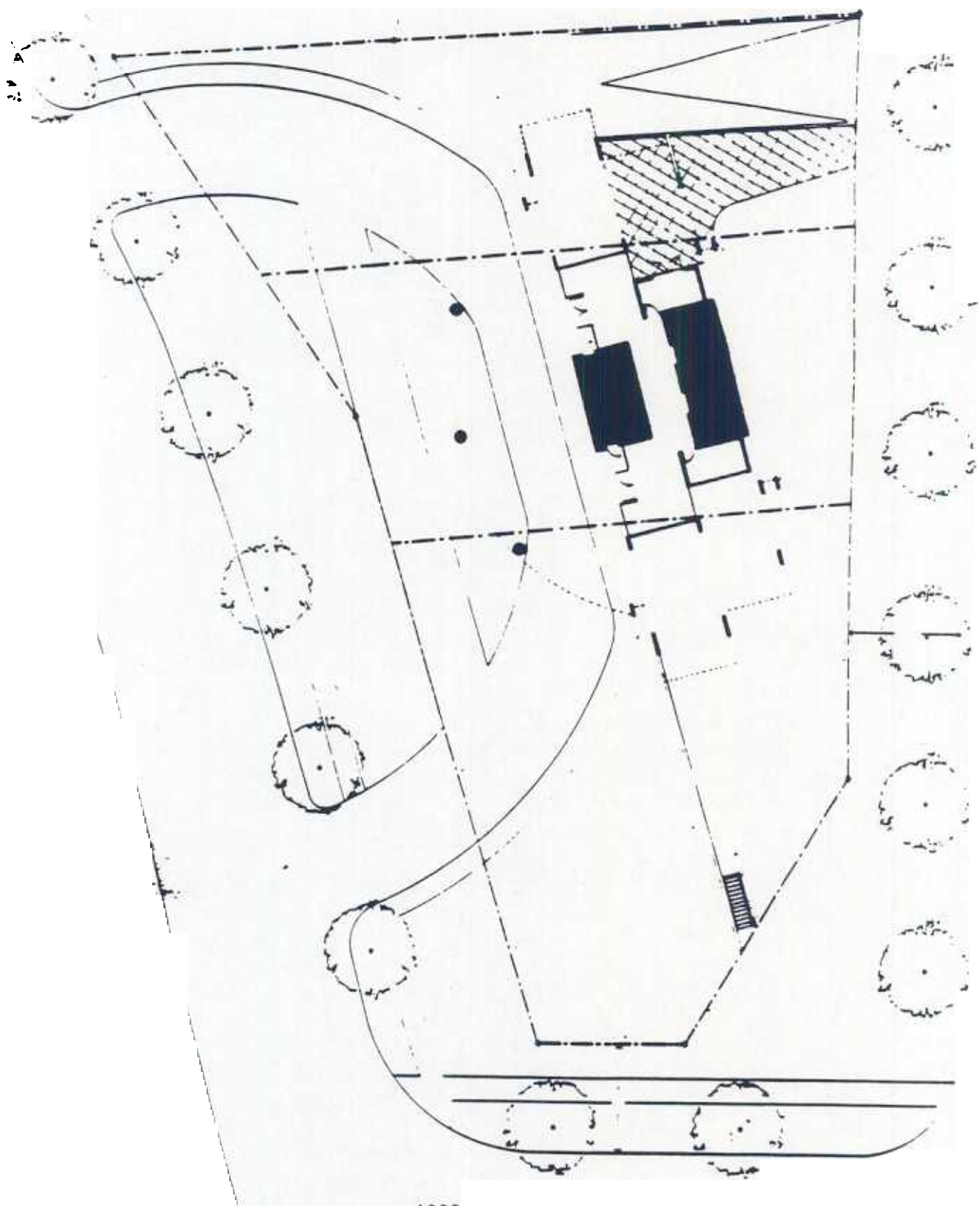


Perry Jones Architects Ltd
 Suite 111 West
 1490 West Broadway
 Vancouver, BC
 (604) 681-8800
 (604) 681-8800

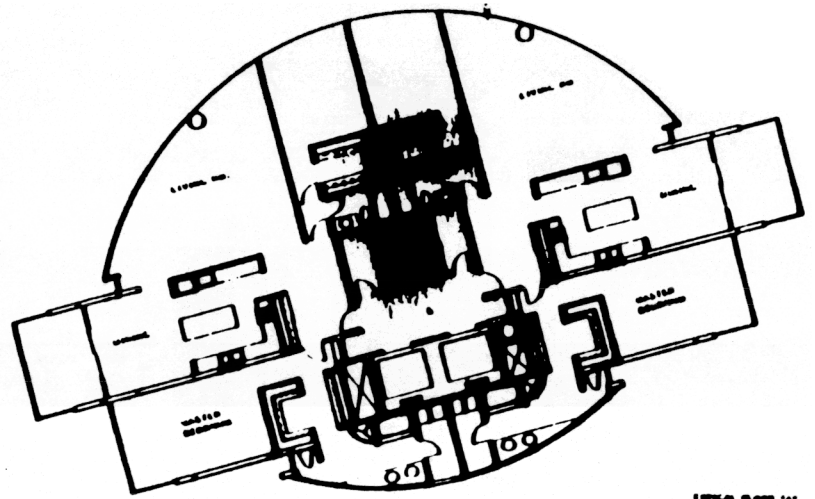
18/22

01 01 ;

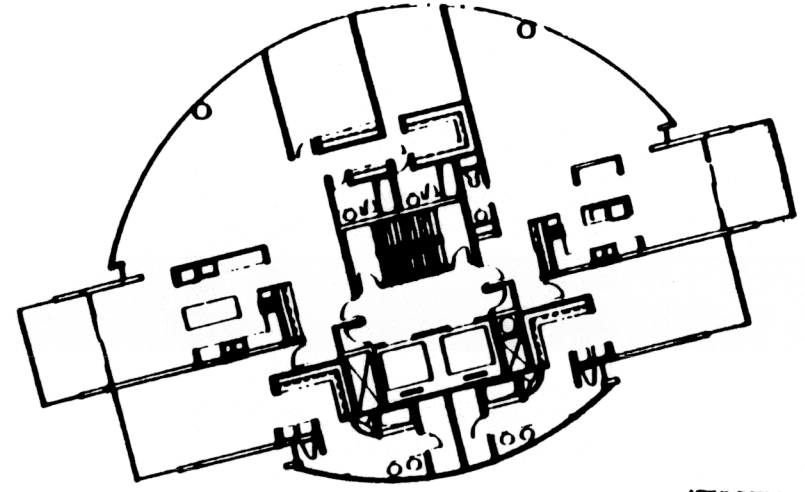
No. 18/22
 1490 West Broadway
 Vancouver, BC



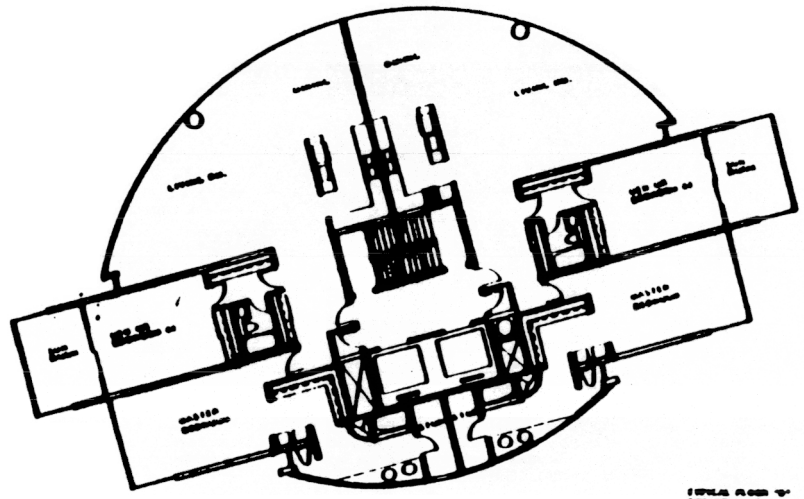
BERRY ARCHITECTS LTD
 200 King Street West
 Toronto, Ontario M5X 1C5
 Tel: (416) 593-1111
 Fax: (416) 593-1112



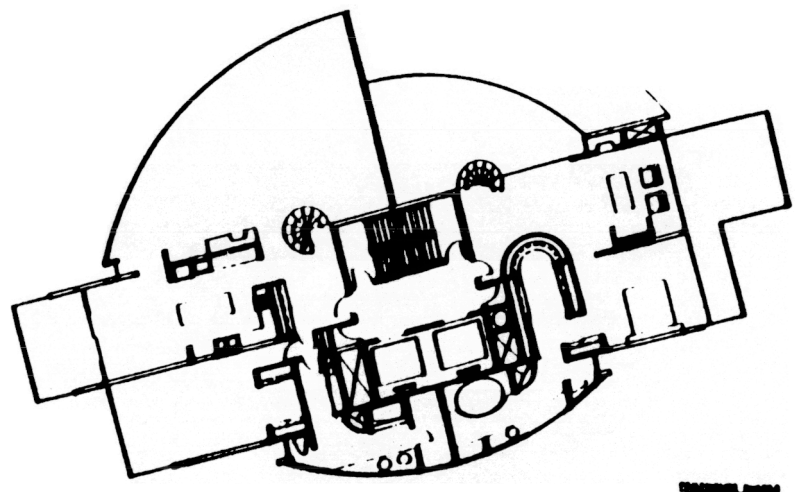
SPECIAL FLOOR #11
 11th Floor Office



SPECIAL FLOOR #12
 12th Floor Office



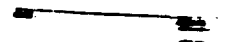
SPECIAL FLOOR #13
 13th Floor Office



SPECIAL FLOOR #14
 14th Floor Office

1334

20/22



SCALE
 1:100
 1" = 10'-0"

DATE
 20/22

PROJECT
 1334

DRAWING NO.
 20/22

10000

10000

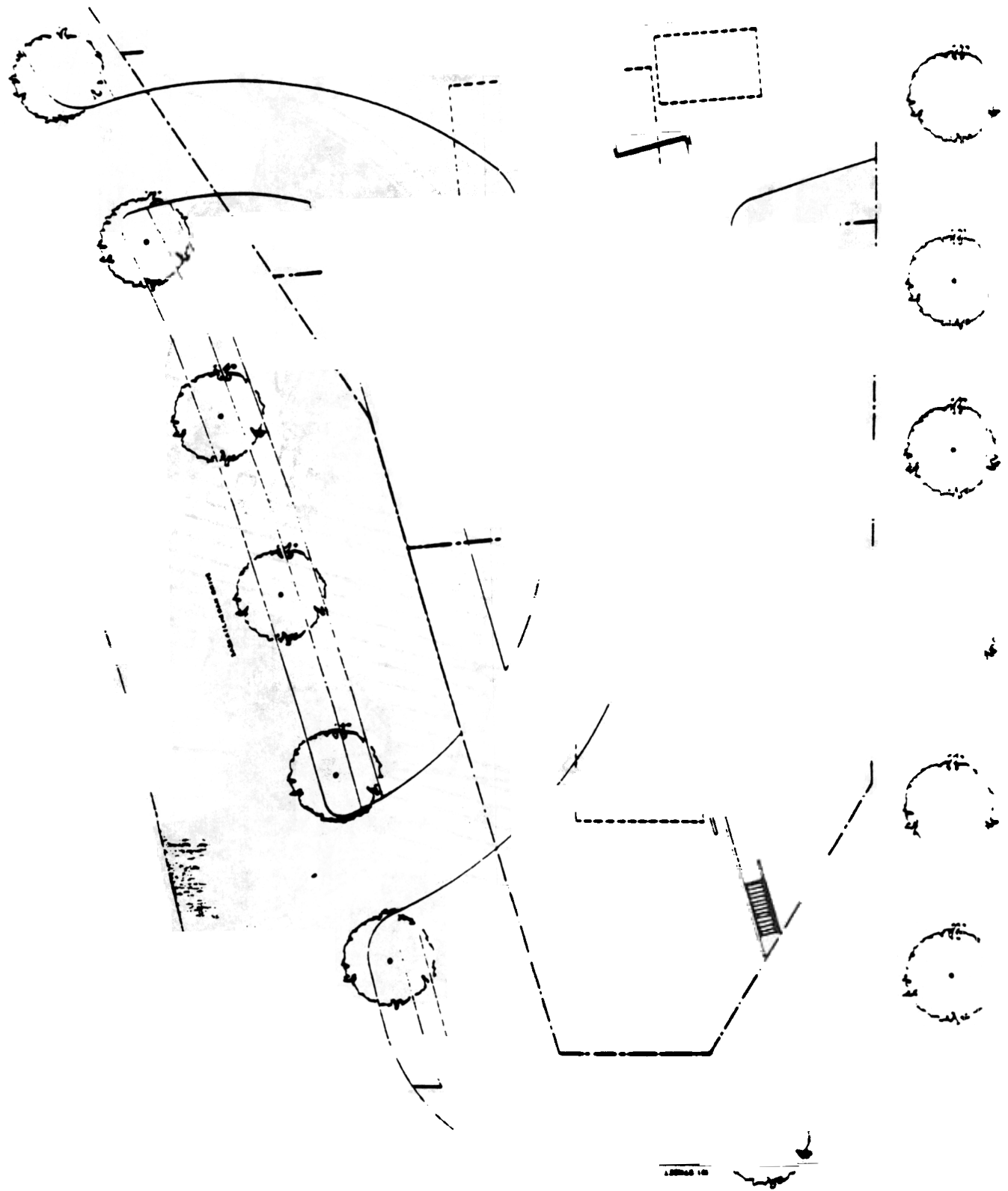
10000

10000

10000

10000

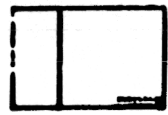
10000





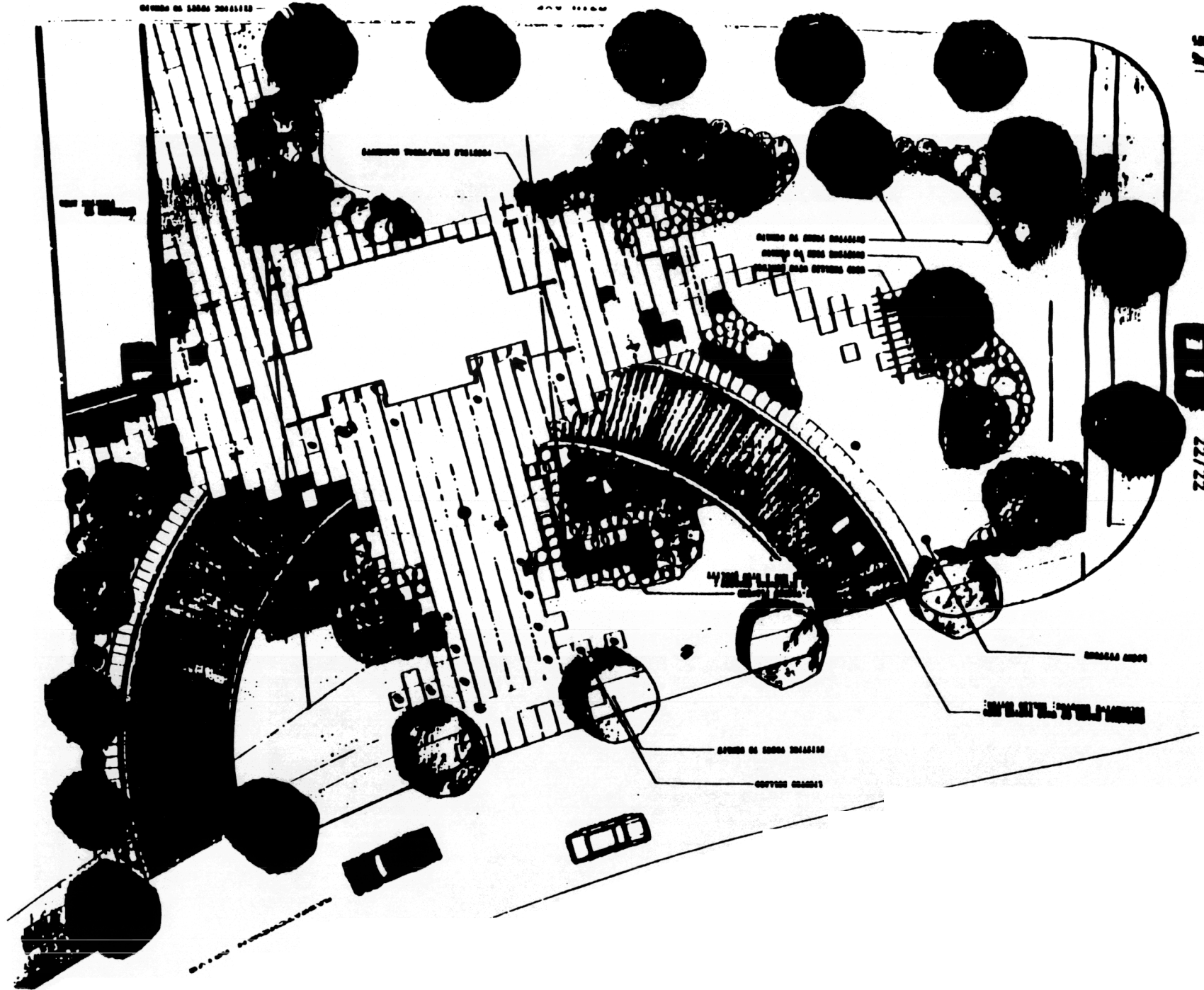
THE DISTRICT
 OF COLUMBIA
 DEPARTMENT OF THE ENVIRONMENT
 PLANNING AND LAND USE DIVISION
 NUMBER 1000

1336



| | |
|------|----|
| DATE | BY |
| | |
| | |
| | |
| | |

BUTLER
 ARBORS
 LUMBS
 NUMBER 1000



22/22